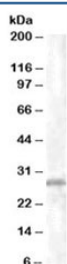


CHMP5 Antibody (R34835)

Catalog No.	Formulation	Size
R34835-100UG	0.5 mg/ml in 1X TBS, pH7.3, with 0.5% BSA (US sourced) and 0.02% sodium azide	100 ug

[Bulk quote request](#)

Availability	1-3 business days
Species Reactivity	Human
Predicted Reactivity	Cow, Mouse, Rat
Format	Antigen affinity purified
Clonality	Polyclonal (goat origin)
Isotype	Goat Ig
Purity	Antigen affinity
Gene ID	51510
Applications	Western Blot : 1-3ug/ml ELISA (peptide) LOD : 1:8000
Limitations	This CHMP5 antibody is available for research use only.



Western blot testing of K562 lysate with CHMP5 antibody at 1ug/ml. Predicted molecular weight: ~25kDa.

Description

Additional name(s) for this target protein: Chromatin modifying protein 5

Application Notes

Optimal dilution of the CHMP5 antibody should be determined by the researcher.

Immunogen

Amino acids NKDGVLVDEFGLPQ were used as the immunogen for this CHMP5 antibody.

Storage

Aliquot and store the CHMP5 antibody at -20oC.