

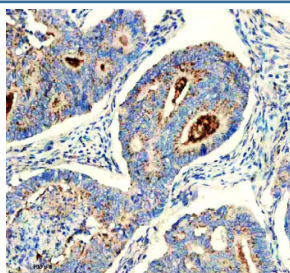
CHMP2B Antibody / Charged multivesicular body protein 2b [clone 25C36] (RQ8902)

Catalog No.	Formulation	Size
RQ8902	Antibody in PBS with 0.02% sodium azide, 50% glycerol and 0.4-0.5mg/ml BSA	100 ul

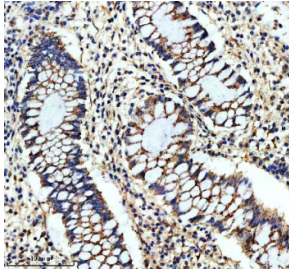
Recombinant **RABBIT MONOCLONAL**

[Bulk quote request](#)

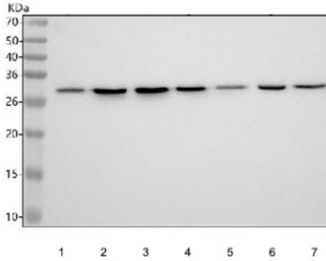
Availability	1-3 days
Species Reactivity	Human
Format	Purified
Clonality	Recombinant Rabbit Monoclonal
Isotype	Rabbit IgG
Clone Name	25C36
Purity	Affinity chromatography
UniProt	Q9UQN3
Localization	Cytoplasm
Applications	Western Blot : 1:500 Immunohistochemistry (FFPE) : 1:50 Immunoprecipitation : 1:50 in 500ug of lysate
Limitations	This CHMP2B antibody is available for research use only.



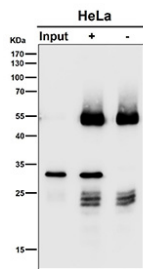
IHC staining of FFPE human colon cancer tissue with CHMP2B antibody, HRP-secondary and DAB substrate. HIER: boil tissue sections in pH8 EDTA for 20 min and allow to cool before testing.



IHC staining of FFPE human colon tissue with CHMP2B antibody, HRP-secondary and DAB substrate. HIER: boil tissue sections in pH8 EDTA for 20 min and allow to cool before testing.



Western blot testing of 1) human A431, 2) human RT4, 3) human A549, 4) human Caco-2, 5) rat brain, 6) rat C6 and 7) mouse brain tissue lysate with CHMP2B antibody. Predicted molecular weight ~24 kDa.



Immunoprecipitation of CHMP2B protein from 500ug of human HeLa whole cell lysate using CHMP2B antibody at 1:50 (Western blot testing done at 1:3000).

Description

Charged multivesicular body protein 2b (CHMP2B) is a component of the endosomal sorting complex required for transport III (ESCRT-III). It plays a critical role in multivesicular body formation, membrane fission, and the sorting of ubiquitinated proteins for lysosomal degradation. CHMP2B is essential for maintaining proper endosomal trafficking and cellular protein homeostasis.

Mutations in CHMP2B have been linked to neurodegenerative disorders, including frontotemporal dementia and amyotrophic lateral sclerosis. Research on CHMP2B helps elucidate mechanisms of vesicular transport, neuronal maintenance, and protein quality control, making it relevant in both basic and disease-focused studies.

Using a high-quality CHMP2B antibody enables accurate detection in applications such as western blot, immunohistochemistry, and immunofluorescence. A CHMP2B antibody from NSJ Bioreagents provides reliable and reproducible performance for studies in membrane trafficking, neurodegeneration, and cellular signaling. Selecting the right CHMP2B antibody is essential for obtaining consistent and meaningful results.

Application Notes

Optimal dilution of the CHMP2B antibody should be determined by the researcher.

Immunogen

A peptide sequence specific to Charged multivesicular body protein 2b protein was used as the immunogen for the CHMP2B antibody.

Storage

After reconstitution, the CHMP2B antibody can be stored for up to one month at 4°C. For long-term, aliquot and store at -20°C. Avoid repeated freezing and thawing.