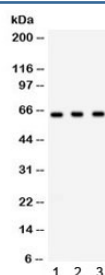


Chk2 Antibody / CHEK2 (R31854)

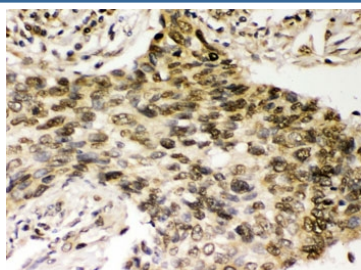
Catalog No.	Formulation	Size
R31854	0.5mg/ml if reconstituted with 0.2ml sterile DI water	100 ug

Bulk quote request

Availability	1-3 business days
Species Reactivity	Human, Mouse, Rat
Format	Antigen affinity purified
Host	Rabbit
Clonality	Polyclonal (rabbit origin)
Isotype	Rabbit IgG
Purity	Antigen affinity
Buffer	Lyophilized from 1X PBS with 2.5% BSA and 0.025% sodium azide
UniProt	O96017
Localization	Nuclear
Applications	Western Blot : 0.1-0.5ug/ml IHC (FFPE) : 0.5-1ug/ml
Limitations	This Chk2 antibody is available for research use only.



Western blot testing of 1) rat spleen, 2) mouse testis, 3) human SW620 lysate with Chk2 antibody. Expected molecular weight: ~61 kDa.



IHC testing of FFPE human lung cancer tissue with Chk2 antibody. HIER: Boil the paraffin sections in pH 6, 10mM citrate buffer for 20 minutes and allow to cool prior to staining.

Description

Chk2 is a serine/threonine-protein kinase which is required for checkpoint-mediated cell cycle arrest, activation of DNA repair and apoptosis in response to the presence of DNA double-strand breaks. May also negatively regulate cell cycle progression during unperturbed cell cycles. Following activation, phosphorylates numerous effectors preferentially at the consensus sequence [L-X-R-X-X-S/T]. Regulates cell cycle checkpoint arrest through phosphorylation of CDC25A, CDC25B and CDC25C, inhibiting their activity. [UniProt]

Application Notes

Optimal dilution of the Chk2 antibody should be determined by the researcher.

Immunogen

Amino acids KLLVVDPKARFTTEEALRHPWLQDEDMKRKFQDL of human Chk2/CHEK2 were used as the immunogen for the Chk2 antibody.

Storage

After reconstitution, the Chk2 antibody can be stored for up to one month at 4oC. For long-term, aliquot and store at -20oC. Avoid repeated freezing and thawing.