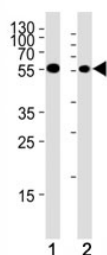


CHK1 Antibody (F48011)

Catalog No.	Formulation	Size
F48011-0.4ML	In 1X PBS, pH 7.4, with 0.09% sodium azide	0.4 ml
F48011-0.08ML	In 1X PBS, pH 7.4, with 0.09% sodium azide	0.08 ml

[Bulk quote request](#)

Availability	1-3 business days
Species Reactivity	Human, Mouse
Format	Antigen affinity purified
Host	Rabbit
Clonality	Polyclonal (rabbit origin)
Isotype	Rabbit Ig
Purity	Antigen affinity
UniProt	O14757
Applications	Western Blot : 1:1000
Limitations	This CHK1 antibody is available for research use only.



Chk1 antibody western blot analysis in (1) HeLa cell line and (2) mouse thymus tissue lysate. Predicted molecular weight ~54kDa.

Description

Checkpoint kinase 1, commonly referred to as CHK1 is an serine/threonine-specific protein kinase that in humans, is encoded by the CHEK1 gene. CHK1 coordinates the DNA damage response (DDR) and cell cycle checkpoint response. Activation results in the initiation of cell cycle checkpoints, cell cycle arrest, DNA repair and cell death to prevent damaged cells from progressing through the cell cycle.

Application Notes

The stated application concentrations are suggested starting amounts. Titration of the CHK1 antibody may be required

due to differences in protocols and secondary/substrate sensitivity.

Immunogen

A portion of amino acids 258-287 from the human protein was used as the immunogen for this CHK1 antibody.

Storage

Store at 4oC for up to one month. For long term, aliquot the CHK1 antibody and store frozen at -20oC or colder. Avoid repeated freeze-thaw cycles.