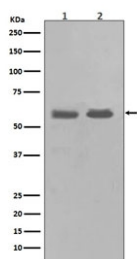


CHK1 Antibody / CHEK1 [clone AAF-3] (RQ4708)

Catalog No.	Formulation	Size
RQ4708	Antibody in PBS with 0.02% sodium azide, 50% glycerol and 0.4-0.5mg/ml BSA	100 ul

[Bulk quote request](#)

Availability	1-2 weeks
Species Reactivity	Human, Rat
Format	Purified
Clonality	Rabbit Monoclonal
Isotype	Rabbit IgG
Clone Name	AAF-3
Purity	Affinity purified
UniProt	O14757
Applications	Western Blot : 1:500-1:2000
Limitations	This CHK1 antibody is available for research use only.



Western blot testing of 1) human K562 and 2) rat PC-12 cell lysate with CHK1 antibody. Predicted molecular weight ~54 kDa.

Description

The protein encoded by CHEK1 belongs to the Ser/Thr protein kinase family. It is required for checkpoint mediated cell cycle arrest in response to DNA damage or the presence of unreplicated DNA. This protein acts to integrate signals from ATM and ATR, two cell cycle proteins involved in DNA damage responses, that also associate with chromatin in meiotic prophase I. Phosphorylation of CDC25A protein phosphatase by this protein is required for cells to delay cell cycle progression in response to double-strand DNA breaks. [RefSeq]

Application Notes

Optimal dilution of the CHK1 antibody should be determined by the researcher.

Immunogen

A synthetic peptide specific to human CHK1 / CHEK1 was used as the immunogen for the CHK1 antibody.

Storage

Store the CHK1 antibody at -20oC.