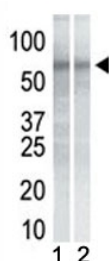


CHK1 Antibody [clone 2G1D5] (F40410)

Catalog No.	Formulation	Size
F40410-0.4ML	In 1X PBS, pH 7.4, with 0.09% sodium azide	0.4 ml
F40410-0.08ML	In 1X PBS, pH 7.4, with 0.09% sodium azide	0.08 ml

[Bulk quote request](#)

Availability	1-3 business days
Species Reactivity	Human, Mouse
Format	Purified
Host	Mouse
Clonality	Monoclonal (mouse origin)
Isotype	Mouse IgM
Clone Name	2G1D5
Purity	Purified
UniProt	O14757
Applications	Western Blot : 1:1 000-1:4 : 000 :
Limitations	This CHK1 antibody is available for research use only.



Western blot testing of mouse NIH3T3 cell lysate (Lane 1) and human K562 cell lysate (2) with CHK1 antibody. Predicted molecular weight ~54kDa.

Description

CHK1 is a serine/threonine-protein kinase which is required for checkpoint-mediated cell cycle arrest and activation of DNA repair in response to the presence of DNA damage or unreplicated DNA. May also negatively regulate cell cycle progression during unperturbed cell cycles. [UniProt]

Application Notes

Titration of the CHK1 antibody may be required due to differences in protocols and secondary/substrate sensitivity.

Immunogen

This monoclonal CHK1 antibody was produced from mice immunized with purified recombinant protein.

Storage

Aliquot the CHK1 antibody and store frozen at -20oC or colder. Avoid repeated freeze-thaw cycles.