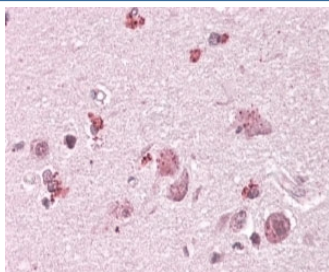


## Chimaerin 2 Antibody (R35305)

Catalog No.	Formulation	Size
R35305-100UG	0.5 mg/ml in 1X TBS, pH7.3, with 0.5% BSA (US sourced) and 0.02% sodium azide	100 ug

[Bulk quote request](#)

Availability	1-3 business days
Species Reactivity	Human
Predicted Reactivity	Cow, Dog, Mouse
Format	Antigen affinity purified
Host	Goat
Clonality	Polyclonal (goat origin)
Isotype	Goat Ig
Purity	Antigen affinity
Gene ID	1124
Applications	Immunohistochemistry (FFPE) : 3-6ug/ml ELISA (peptide) LOD : 1:8000
Limitations	This Chimaerin 2 antibody is available for research use only.



IHC testing of FFPE human cortex with Chimaerin 2 antibody at 4ug/ml. HIER: steamed with pH6 citrate buffer, AP-staining.

### Description

Additional name(s) for this target protein: CHN2, Chimerin

### Application Notes

Optimal dilution of the Chimaerin 2 antibody should be determined by the researcher.

## **Immunogen**

Amino acids QILIENEDVLF were used as the immunogen for this Chimaerin 2 antibody.

## **Storage**

Aliquot and store the Chimaerin 2 antibody at -20oC.