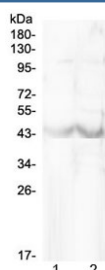


Chi3l1 Antibody / Chitinase-3-like protein 1 (R32893)

Catalog No.	Formulation	Size
R32893	0.5mg/ml if reconstituted with 0.2ml sterile DI water	100 ug

Bulk quote request

Availability	1-3 business days
Species Reactivity	Mouse
Format	Antigen affinity purified
Clonality	Polyclonal (rabbit origin)
Isotype	Rabbit IgG
Purity	Antigen affinity
Buffer	Lyophilized from 1X PBS with 2.5% BSA, 0.025% sodium azide
UniProt	Q61362
Applications	Western Blot : 0.5-1ug/ml Direct ELISA (mouse Recombinant Protein) : 0.1-0.5ug/ml (BSA-free format available)
Limitations	This Chi3l1 antibody is available for research use only.



Western blot testing of mouse 1) RAW264.7 and 2) HEPA1-6 cell lysate with Chi3l1 antibody at 0.5ug/ml. Expected molecular weight: 39-43 kDa.

Description

Chitinase-3-like protein 1 (CHI3L1), also known as YKL-40, is a secreted glycoprotein that is approximately 40 kDa in size that in humans is encoded by the CHI3L1 gene. This gene is mapped to 1q32.1. Chitinases catalyze the hydrolysis of chitin, which is an abundant glycopolymer found in insect exoskeletons and fungal cell walls. The glycoside hydrolase 18 family of chitinases includes eight human family members. This gene encodes a glycoprotein member of the glycosyl hydrolase 18 family. The protein lacks chitinase activity and is secreted by activated macrophages, chondrocytes, neutrophils and synovial cells. The protein is thought to play a role in the process of inflammation and tissue remodeling.

Application Notes

Optimal dilution of the Chi3l1 antibody should be determined by the researcher.

Immunogen

A recombinant mouse protein corresponding to amino acids Y30-K262 was used as the immunogen for the Chi3l1 antibody.

Storage

After reconstitution, the Chi3l1 antibody can be stored for up to one month at 4°C. For long-term, aliquot and store at -20°C. Avoid repeated freezing and thawing.