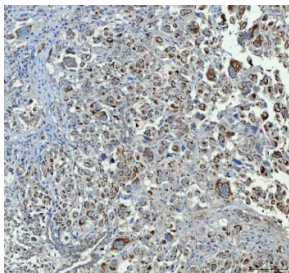


## CHGA Antibody / Chromogranin A (RQ7726)

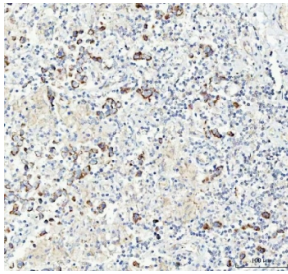
Catalog No.	Formulation	Size
RQ7726	0.5mg/ml if reconstituted with 0.2ml sterile DI water	100 ug

### Bulk quote request

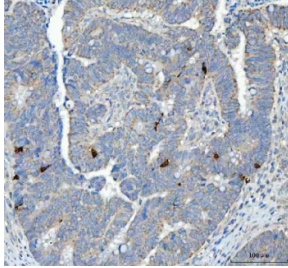
<b>Availability</b>	1-3 business days
<b>Species Reactivity</b>	Human
<b>Format</b>	Antigen affinity purified
<b>Host</b>	Rabbit
<b>Clonality</b>	Polyclonal (rabbit origin)
<b>Isotype</b>	Rabbit IgG
<b>Purity</b>	Antigen affinity purified
<b>Buffer</b>	Lyophilized from 1X PBS with 2% Trehalose
<b>UniProt</b>	P10645
<b>Localization</b>	Finely granular cytoplasmic
<b>Applications</b>	Western Blot : 0.5-1ug/ml Immunohistochemistry (FFPE) : 2-5ug/ml Flow Cytometry : 1-3ug/million cells Direct ELISA : 0.1-0.5ug/ml
<b>Limitations</b>	This CHGA antibody is available for research use only.



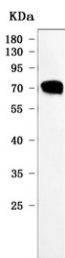
IHC staining of FFPE human lung adenocarcinoma tissue with CHGA antibody. HIER: boil tissue sections in pH8 EDTA for 20 min and allow to cool before testing.



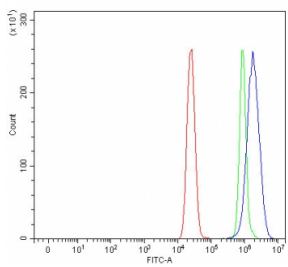
IHC staining of FFPE human testicular germ cell tumor tissue with CHGA antibody.  
HIER: boil tissue sections in pH8 EDTA for 20 min and allow to cool before testing.



IHC staining of FFPE human colorectal adenocarcinoma tissue with CHGA antibody.  
HIER: boil tissue sections in pH8 EDTA for 20 min and allow to cool before testing.



Western blot testing of human SH-SY5Y cell lysate with CHGA antibody. Predicted molecular weight ~50 kDa but may be observed at higher molecular weights due to glycosylation.



Flow cytometry testing of human MCF7 cells with CHGA antibody at 1ug/million cells (blocked with goat sera); Red=cells alone, Green=isotype control, Blue= CHGA antibody.

## Description

CHGA, also known as CGA or Chromogranin A, is an acidic protein co-stored and co-released with catecholamines from storage granules in the adrenal medulla. CHGA is a member of the granin family of neuroendocrine secretory protein, It is located in secretory vesicles of neurons and endocrine cells. In humans, CHGA protein is encoded by the CHGA gene, and it is mapped to 14q32.12. CHGA gene product is a precursor to three biologically active peptides: vasostatin, pancreastatin, and parastatin. These peptides negatively modulate the neuroendocrine function of the releasing cell (autocrine) or nearby cells (paracrine).

## Application Notes

Optimal dilution of the CHGA antibody should be determined by the researcher.

## Immunogen

E. coli-derived recombinant human protein (amino acids L19-E417) was used as the immunogen for the CHGA antibody.

## Storage

After reconstitution, the CHGA antibody can be stored for up to one month at 4°C. For long-term, aliquot and store at

-20oC. Avoid repeated freezing and thawing.