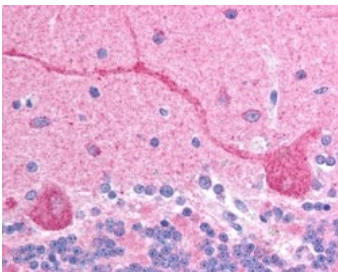


## CHFR Antibody (R34433)

Catalog No.	Formulation	Size
R34433-100UG	0.5 mg/ml in 1X TBS, pH7.3, with 0.5% BSA (US sourced) and 0.02% sodium azide	100 ug

[Bulk quote request](#)

<b>Availability</b>	1-3 business days
<b>Species Reactivity</b>	Human
<b>Predicted Reactivity</b>	Cow, Mouse, Pig, Rat
<b>Format</b>	Antigen affinity purified
<b>Host</b>	Goat
<b>Clonality</b>	Polyclonal (goat origin)
<b>Isotype</b>	Goat Ig
<b>Purity</b>	Antigen affinity
<b>Gene ID</b>	55743
<b>Applications</b>	Immunohistochemistry (FFPE) : 2.5ug/ml ELISA (peptide) LOD : 1:64000
<b>Limitations</b>	This CHFR antibody is available for research use only.



IHC testing of FFPE human cerebellum with CHFR antibody at 2.5ug/ml. HIER: steamed with pH6 citrate buffer, AP-staining.

### Description

Additional name(s) for this target protein: Checkpoint with forkhead and ring finger domains

### Application Notes

Optimal dilution of the CHFR antibody should be determined by the researcher.

## **Immunogen**

Amino acids KFNHICEQTRFKN were used as the immunogen for this CHFR antibody.

## **Storage**

Aliquot and store the CHFR antibody at -20oC.