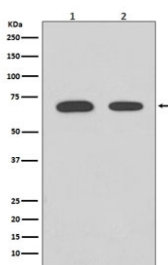


## CHEK2 Antibody / Chk2 [clone FOF-3] (RQ4827)

Catalog No.	Formulation	Size
RQ4827	Antibody in PBS with 0.02% sodium azide, 50% glycerol and 0.4-0.5mg/ml BSA	100 ul

[Bulk quote request](#)

Availability	1-2 weeks
Species Reactivity	Human
Format	Purified
Host	Rabbit
Clonality	Rabbit Monoclonal
Isotype	Rabbit IgG
Clone Name	FOF-3
Purity	Affinity purified
UniProt	O96017
Applications	Western Blot : 1:10000-1:20000
Limitations	This CHEK2 antibody is available for research use only.



Western blot testing of human 1) HeLa and 2) 239T cell lysate with CHEK2 antibody.  
Predicted molecular weight ~61 kDa.

### Description

Checkpoint kinase 2 is a serine/threonine-protein kinase which is required for checkpoint-mediated cell cycle arrest, activation of DNA repair and apoptosis in response to the presence of DNA double-strand breaks. [UniProt]

### Application Notes

Optimal dilution of the CHEK2 antibody should be determined by the researcher.

## **Immunogen**

A synthetic peptide specific to human CHEK2 was used as the immunogen for the CHEK2 antibody.

## **Storage**

Store the CHEK2 antibody at -20oC.