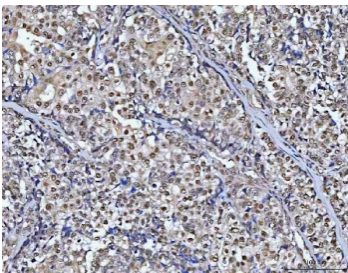


CHD8 Antibody / Chromodomain-helicase-DNA-binding protein 8 (RQ8275)

Catalog No.	Formulation	Size
RQ8275	0.5mg/ml if reconstituted with 0.2ml sterile DI water	100 ug

Bulk quote request

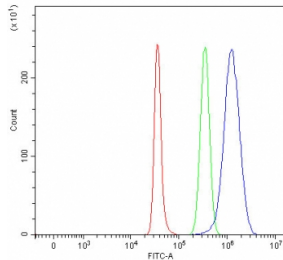
Availability	1-3 business days
Species Reactivity	Human
Format	Antigen affinity purified
Host	Rabbit
Clonality	Polyclonal (rabbit origin)
Isotype	Rabbit IgG
Purity	Antigen affinity purified
Buffer	Lyophilized from 1X PBS with 2% Trehalose
UniProt	Q9HCK8
Localization	Nuclear
Applications	Western Blot : 0.5-1ug/ml Immunohistochemistry (FFPE) : 2-5ug/ml Flow Cytometry : 1-3ug/million cells Direct ELISA : 0.1-0.5ug/ml
Limitations	This CHD8 antibody is available for research use only.



IHC staining of FFPE human ovarian cancer tissue with CHD8 antibody. HIER: boil tissue sections in pH8 EDTA for 20 min and allow to cool before testing.



Western blot testing of human HepG2 cell lysate with CHD8 antibody. Predicted molecular weight ~290 kDa.



Flow cytometry testing of fixed and permeabilized human SH-SY5Y cells with CHD8 antibody at 1ug/million cells (blocked with goat sera); Red=cells alone, Green=isotype control, Blue= CHD8 antibody.

Description

Chromodomain-helicase-DNA-binding protein 8 is an enzyme that in humans is encoded by the CHD8 gene. This gene encodes a member of the chromodomain-helicase-DNA binding protein family, which is characterized by a SNF2-like domain and two chromatin organization modifier domains. The encoded protein also contains brahma and kismet domains, which are common to the subfamily of chromodomain-helicase-DNA binding proteins to which this protein belongs. This gene has been shown to function in several processes that include transcriptional regulation, epigenetic remodeling, promotion of cell proliferation, and regulation of RNA synthesis. Allelic variants of this gene are associated with autism spectrum disorder. Alternative splicing results in multiple transcript variants.

Application Notes

Optimal dilution of the CHD8 antibody should be determined by the researcher.

Immunogen

An E.coli-derived human recombinant protein (D10-A428) was used as the immunogen for the CHD8 antibody.

Storage

After reconstitution, the CHD8 antibody can be stored for up to one month at 4oC. For long-term, aliquot and store at -20oC. Avoid repeated freezing and thawing.