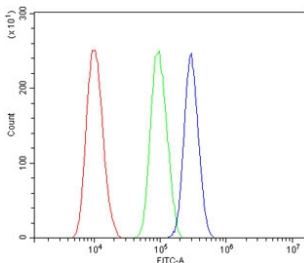


CHD2 Antibody (RQ6045)

Catalog No.	Formulation	Size
RQ6045	0.5mg/ml if reconstituted with 0.2ml sterile DI water	100 ug

Bulk quote request

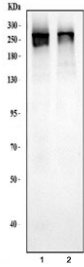
Availability	1-3 business days
Species Reactivity	Human, Monkey
Format	Antigen affinity purified
Host	Rabbit
Clonality	Polyclonal (rabbit origin)
Isotype	Rabbit IgG
Purity	Affinity purified
Buffer	Lyophilized from 1X PBS with 2% Trehalose and 0.025% sodium azide
UniProt	O14647
Applications	Western Blot : 0.5-1ug/ml Flow Cytometry : 1-3ug/million cells
Limitations	This CHD2 antibody is available for research use only.



Flow cytometry testing of human SiHa cells with CHD2 antibody at 1ug/million cells (blocked with goat sera); Red=cells alone, Green=isotype control, Blue= CHD2 antibody.



Western blot testing of human 1) HeLa and 2) K562 lysate with CHD2 antibody. Predicted molecular weight ~211 kDa, commonly observed from 211-260 kDa.



Western blot testing of 1) monkey COS-7 and 2) human SiHa cell lysate with CHD2 antibody. Predicted molecular weight ~211 kDa, commonly observed from 211-260 kDa.

Description

Chromodomain-helicase-DNA-binding protein 2 is an enzyme that in humans is encoded by the CHD2 gene. The CHD family of proteins is characterized by the presence of chromo (chromatin organization modifier) domains and SNF2-related helicase/ATPase domains. CHD genes alter gene expression possibly by modification of chromatin structure thus altering access of the transcriptional apparatus to its chromosomal DNA template. CHD2 catalyzes the assembly of chromatin into periodic arrays; and the N-terminal region of CHD2, which contains tandem chromodomains, serves an auto-inhibitory role in both the DNA-binding and ATPase activities of CHD2.

Application Notes

Optimal dilution of the CHD2 antibody should be determined by the researcher.

Immunogen

Amino acids DKLGEYKQPLPPLHPAVSDPRS from the human protein were used as the immunogen for the CHD2 antibody.

Storage

After reconstitution, the CHD2 antibody can be stored for up to one month at 4°C. For long-term, aliquot and store at -20°C. Avoid repeated freezing and thawing.