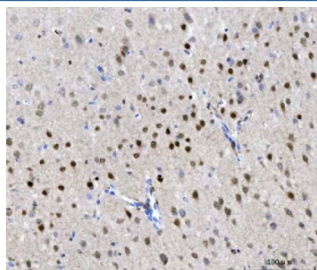


## CHD1 Antibody / Chromodomain-helicase-DNA-binding protein 1 (RQ7221)

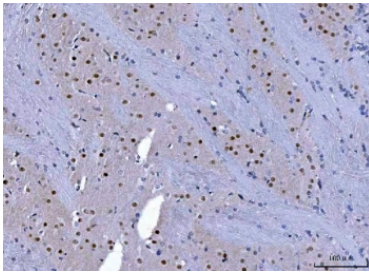
Catalog No.	Formulation	Size
RQ7221	0.5mg/ml if reconstituted with 0.2ml sterile DI water	100 ug

**Bulk quote request**

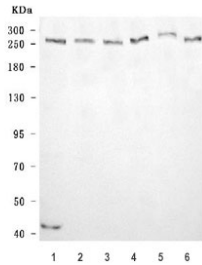
<b>Availability</b>	1-3 business days
<b>Species Reactivity</b>	Human, Mouse, Rat
<b>Format</b>	Antigen affinity purified
<b>Clonality</b>	Polyclonal (rabbit origin)
<b>Isotype</b>	Rabbit IgG
<b>Purity</b>	Antigen affinity purified
<b>Buffer</b>	Lyophilized from 1X PBS with 2% Trehalose
<b>UniProt</b>	O14646
<b>Localization</b>	Nuclear, cytoplasmic
<b>Applications</b>	Western Blot : 0.5-1ug/ml Immunohistochemistry (FFPE) : 2-5ug/ml Flow Cytometry : 1-3ug/million cells Direct ELISA : 0.1-0.5ug/ml
<b>Limitations</b>	This CHD1 antibody is available for research use only.



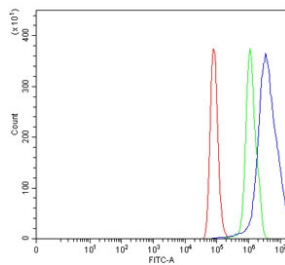
IHC staining of FFPE mouse brain tissue with CHD1 antibody. HIER: boil tissue sections in pH8 EDTA for 20 min and allow to cool before testing.



IHC staining of FFPE rat brain tissue with CHD1 antibody. HIER: boil tissue sections in pH8 EDTA for 20 min and allow to cool before testing.



Western blot testing of human 1) HeLa, 2) 293T, 3) K562, 4) MOLT-4, 5) U-251 and 6) HEL cell lysate with CHD1 antibody. Predicted molecular weight ~197 kDa but can be observed at ~250 kDa.



Flow cytometry testing of human HeLa cells with CHD1 antibody at 1ug/million cells (blocked with goat sera); Red=cells alone, Green=isotype control, Blue= CHD1 antibody.

## Description

The Chromodomain-Helicase DNA-binding 1 is a protein that, in humans, is encoded by the CHD1 gene. The CHD family of proteins is characterized by the presence of chromo (chromatin organization modifier) domains and SNF2-related helicase/ATPase domains. CHD genes alter gene expression possibly by modification of chromatin structure thus altering access of the transcriptional apparatus to its chromosomal DNA template.

## Application Notes

Optimal dilution of the CHD1 antibody should be determined by the researcher.

## Immunogen

Recombinant human protein (amino acids E71-D1250) was used as the immunogen for the CHD1 antibody.

## Storage

After reconstitution, the CHD1 antibody can be stored for up to one month at 4oC. For long-term, aliquot and store at -20oC. Avoid repeated freezing and thawing.

