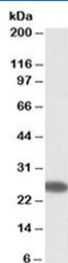


## CHCHD3 Antibody (R35778)

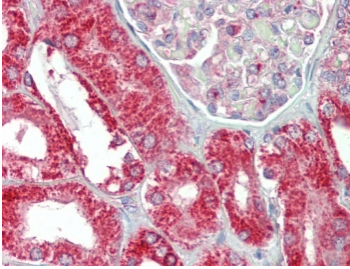
Catalog No.	Formulation	Size
R35778-100UG	0.5 mg/ml in 1X TBS, pH7.3, with 0.5% BSA (US sourced) and 0.02% sodium azide	100 ug

[Bulk quote request](#)

<b>Availability</b>	1-3 business days
<b>Species Reactivity</b>	Human
<b>Predicted Reactivity</b>	Mouse, Rat, Sheep, Dog, Cow
<b>Format</b>	Antigen affinity purified
<b>Host</b>	Goat
<b>Clonality</b>	Polyclonal (goat origin)
<b>Isotype</b>	Goat Ig
<b>Purity</b>	Antigen affinity
<b>Gene ID</b>	54927
<b>Applications</b>	Western Blot : 0.3-1ug/ml (1) IHC (FFPE) : 5ug/ml ELISA (peptide) LOD : 1:32000
<b>Limitations</b>	This CHCHD3 antibody is available for research use only.



Western blot testing of human placenta lysate with CHCHD3 antibody at 0.3ug/ml.  
Predicted molecular weight: ~26 kDa.



IHC testing of FFPE human kidney tissue with CHCHD3 antibody at 5ug/ml. Required HIER: steamed antigen retrieval with pH6 citrate buffer; AP-staining.

## Description

Additional name(s) for this target protein: Coiled-coil-helix-coiled-coil-helix domain containing 3

## Application Notes

Optimal dilution of the CHCHD3 antibody should be determined by the researcher.

1. An ~30kDa band has been reported in ThP1 and in human primary monocyte derived dendritic cells.

## Immunogen

Amino acids RSSEFYRVTTTEQYQ were used as the immunogen for this CHCHD3 antibody.

## Storage

Aliquot and store the CHCHD3 antibody at -20oC.