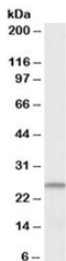


CHCHD3 Antibody (R34432)

Catalog No.	Formulation	Size
R34432-100UG	0.5 mg/ml in 1X TBS, pH7.3, with 0.5% BSA (US sourced) and 0.02% sodium azide	100 ug

[Bulk quote request](#)

Availability	1-3 business days
Species Reactivity	Human
Predicted Reactivity	Cow, Dog, Mouse, Rat, Sheep
Format	Antigen affinity purified
Host	Goat
Clonality	Polyclonal (goat origin)
Isotype	Goat Ig
Purity	Antigen affinity
Gene ID	54927
Applications	Western Blot : 1-3ug/ml (1) ELISA (peptide) LOD : 1:16000
Limitations	This CHCHD3 antibody is available for research use only.



Western blot testing of human heart lysate with CHCHD3 antibody at 1ug/ml. Predicted molecular weight: ~26kDa.

Description

Additional name(s) for this target protein: Coiled-coil-helix-coiled-coil-helix domain containing 3

Application Notes

Optimal dilution of the CHCHD3 antibody should be determined by the researcher.

1. An ~30kDa band has been reported in THP1 and in human primary monocyte derived dendritic cells.

Immunogen

Amino acids KFKRYESHPCAD were used as the immunogen for this CHCHD3 antibody.

Storage

Aliquot and store the CHCHD3 antibody at -20oC.