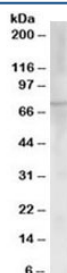


ChAT Antibody (R33259)

Catalog No.	Formulation	Size
R33259-100UG	0.5 mg/ml in 1X TBS, pH7.3, with 0.5% BSA (US sourced) and 0.02% sodium azide	100 ug

[Bulk quote request](#)

Availability	1-3 business days
Species Reactivity	Human
Predicted Reactivity	Dog, Pig, Cow
Format	Antigen affinity purified
Clonality	Polyclonal (goat origin)
Isotype	Goat Ig
Purity	Antigen affinity
Gene ID	1103
Applications	Western Blot : 0.03-0.3ug/ml ELISA (peptide) LOD : 1:32000
Limitations	This ChAT antibody is available for research use only.



Western blot testing of human placenta lysate with ChAT antibody at 0.03ug/ml.
Predicted molecular weight ~74 kDa.

Description

Additional name(s) for this target protein: Choline acetyltransferase

Application Notes

Optimal dilution of the ChAT antibody should be determined by the researcher.

Immunogen

Amino acids CKEKATRPSQGHQP were used as the immunogen for this ChAT antibody.

Storage

Aliquot and store the ChAT antibody at -20oC.