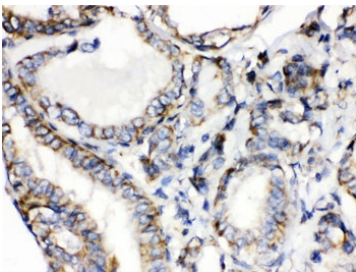


## CGRP Antibody / CALCA / Calcitonin (R32377)

Catalog No.	Formulation	Size
R32377	0.5mg/ml if reconstituted with 0.2ml sterile DI water	100 ug

[Bulk quote request](#)

<b>Availability</b>	1-3 business days
<b>Species Reactivity</b>	Human
<b>Format</b>	Antigen affinity purified
<b>Host</b>	Rabbit
<b>Clonality</b>	Polyclonal (rabbit origin)
<b>Isotype</b>	Rabbit IgG
<b>Purity</b>	Antigen affinity
<b>Buffer</b>	Lyophilized from 1X PBS with 2.5% BSA and 0.025% sodium azide
<b>UniProt</b>	P06881
<b>Localization</b>	Cytoplasmic
<b>Applications</b>	IHC (FFPE) : 0.5-1ug/ml
<b>Limitations</b>	This CGRP antibody is available for research use only.



IHC testing of FFPE human thyroid cancer tissue with CGRP antibody. HIER: Boil the paraffin sections in pH 6, 10mM citrate buffer for 20 minutes and allow to cool prior to testing.

### Description

Calcitonin gene-related peptide 1, also known as CALCA, is a peptide hormone synthesized by the parafollicular cells of the thyroid. It is mapped to 11p15.2. Calcitonin belongs to the calcitonin-like protein family. Calcitonin is involved in calcium regulation and acts to regulate phosphorus metabolism. Calcitonin gene-related peptide functions as a vasodilator and as an antimicrobial peptide while katacalcin is a calcium-lowering peptide. Multiple transcript variants encoding different isoforms have been found for this gene.

## Application Notes

Optimal dilution of the CGRP antibody should be determined by the researcher.

## Immunogen

Amino acids ACDTATCVTHRLAGLLSRSGGVVKNNFVPTNVGSKAF were used as the immunogen for the CGRP antibody.

## Storage

After reconstitution, the CGRP antibody can be stored for up to one month at 4°C. For long-term, aliquot and store at -20°C. Avoid repeated freezing and thawing.