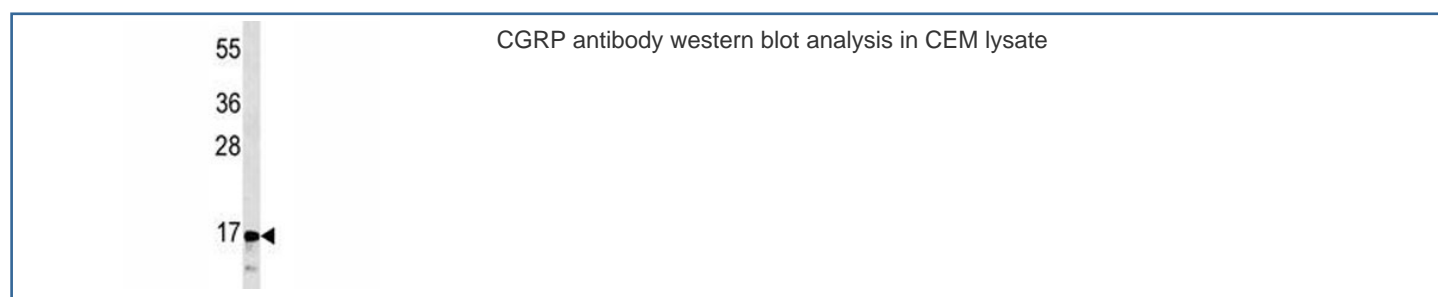


CGRP Antibody / CALCA / Calcitonin [clone 406CT21.4.3] (F40344)

Catalog No.	Formulation	Size
F40344-0.4ML	In 1X PBS, pH 7.4, with 0.09% sodium azide	0.4 ml
F40344-0.08ML	In 1X PBS, pH 7.4, with 0.09% sodium azide	0.08 ml

[Bulk quote request](#)

Availability	1-3 business days
Species Reactivity	Human
Format	Purified
Clonality	Monoclonal (mouse origin)
Isotype	Mouse IgM
Clone Name	406CT21.4.3
Purity	Purified
UniProt	P01258
Localization	Cytoplasmic
Applications	Western Blot : 1:100-1:250
Limitations	This CGRP antibody is available for research use only.



Description

Calcitonin/Calcitonin Gene Related Peptide/CGRP/CALCA causes a rapid but short-lived drop in the level of calcium and phosphate in blood by promoting the incorporation of those ions in the bones. Katalcalcin (a cleavage product) is a potent plasma calcium-lowering peptide. [UniProt]

Application Notes

The stated application concentrations are suggested starting amounts. Titration of the CGRP antibody may be required due to differences in protocols and secondary/substrate sensitivity.

Immunogen

A portion of amino acids 56-84 from the human protein was used as the immunogen for this CGRP antibody.

Storage

Store at 4°C for up to one month. For long term, aliquot the CGRP antibody and store frozen at -20°C or colder. Avoid repeated freeze-thaw cycles.