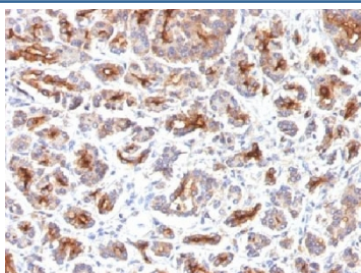


CFTR Antibody [clone SPM176] (V3259)

Catalog No.	Formulation	Size
V3259-100UG	0.2 mg/ml in 1X PBS with 0.1 mg/ml BSA (US sourced) and 0.05% sodium azide	100 ug
V3259-20UG	0.2 mg/ml in 1X PBS with 0.1 mg/ml BSA (US sourced) and 0.05% sodium azide	20 ug
V3259SAF-100UG	1 mg/ml in 1X PBS; BSA free, sodium azide free	100 ug

[Bulk quote request](#)

Species Reactivity	Human
Format	Purified
Clonality	Monoclonal (mouse origin)
Isotype	Mouse IgG2a, kappa
Clone Name	SPM176
Purity	Protein G affinity chromatography
Buffer	1X PBS, pH 7.4
UniProt	P13569
Gene ID	1080
Localization	Cell surface, cytoplasmic
Applications	Immunohistochemistry (FFPE) : 1-2ug/ml for 30 min at RT
Limitations	This CFTR antibody is available for research use only.



IHC testing of FFPE human pancreas with CFTR antibody (clone SPM176). HIER: boil tissue sections in 10mM Tris with 1mM EDTA, pH 9, for 10-20 min.

Description

Cystic fibrosis transmembrane conductance regulator (CFTR) is involved in the transport of chloride ions. May regulate bicarbonate secretion and salvage in epithelial cells by regulating the SLC4A7 transporter. Can inhibit the chloride channel activity of ANO1. Plays a role in the chloride and bicarbonate homeostasis during sperm epididymal maturation and capacitation. [UniProt]

Application Notes

The concentration stated for each application is a general starting point. Variations in protocols, secondaries and substrates may require the CFTR antibody to be titrated up or down for optimal performance.

Immunogen

Human partial recombinant protein was used as the immunogen for this CFTR antibody.

Storage

Store the CFTR antibody at 2-8°C (with azide) or aliquot and store at -20°C or colder (without azide).