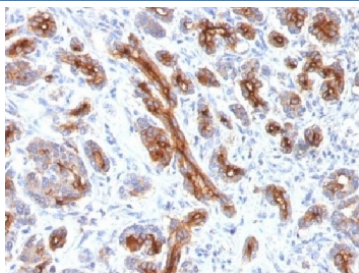


CFTR Antibody [clone CFTR/1341] (V3424)

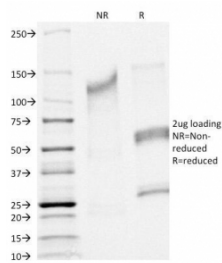
Catalog No.	Formulation	Size
V3424-100UG	0.2 mg/ml in 1X PBS with 0.1 mg/ml BSA (US sourced) and 0.05% sodium azide	100 ug
V3424-20UG	0.2 mg/ml in 1X PBS with 0.1 mg/ml BSA (US sourced) and 0.05% sodium azide	20 ug
V3424SAF-100UG	1 mg/ml in 1X PBS; BSA free, sodium azide free	100 ug

[Bulk quote request](#)

Species Reactivity	Human
Format	Purified
Host	Mouse
Clonality	Monoclonal (mouse origin)
Isotype	Mouse IgG1, kappa
Clone Name	CFTR/1341
Purity	Protein G affinity chromatography
Buffer	1X PBS, pH 7.4
Gene ID	1080
Localization	Cell surface, cytoplasmic
Applications	Immunohistochemistry (FFPE) : 0.5-1ug/ml for 30 min at RT
Limitations	This CFTR antibody is available for research use only.



IHC testing of FFPE human pancreas with CFTR antibody (clone CFTR/1341). HIER: boil tissue sections in 10mM Tris with 1mM EDTA, pH9 for 10-20 min followed by cooling at RT for 20 min.



SDS-PAGE Analysis of Purified, BSA-Free CFTR Antibody (clone CFTR/1341).
Confirmation of Integrity and Purity of the Antibody.

Description

Cystic fibrosis transmembrane conductance regulator (CFTR) is composed of two membrane-spanning domains (MSD), two nucleotide-binding domains (NBD), and an R domain. It is structurally similar to multidrug resistance (MDR1) protein and both are members of the superfamily of ATP-binding cassette (ABC) transporters, also known as traffic ATPases, which are implicated in the movement of various substrates. The protein is a small conductance adenosine 3',5'-cyclic monophosphate (cAMP)-activated chloride ion channel found in the apical membranes of epithelia within the pancreas, airway, intestine, bile duct, sweat gland, and male genital ducts. CFTR is a valuable marker of human pancreatic duct cell development and differentiation.

This CFTR antibody is part of a [broader CFTR antibody panel](#) offered by NSJ Bioreagents.

Application Notes

The concentration stated for each application is a general starting point. Variations in protocols, secondaries and substrates may require the CFTR antibody to be titered up or down for optimal performance.

Immunogen

Human recombinant protein was used as the immunogen for this CFTR antibody.

Storage

Store the CFTR antibody at 2-8°C (with azide) or aliquot and store at -20°C or colder (without azide).