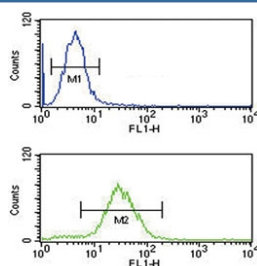


CFL1 Antibody / Cofilin 1 (F54403)

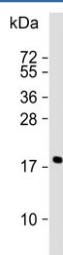
Catalog No.	Formulation	Size
F54403-0.4ML	In 1X PBS, pH 7.4, with 0.09% sodium azide	0.4 ml
F54403-0.08ML	In 1X PBS, pH 7.4, with 0.09% sodium azide	0.08 ml

[Bulk quote request](#)

Availability	1-3 business days
Species Reactivity	Human, Mouse
Format	Purified
Host	Rabbit
Clonality	Polyclonal (rabbit origin)
Isotype	Rabbit Ig
Purity	Antigen affinity purified
UniProt	P23528
Applications	Flow Cytometry : 1:25 (1x10 ⁶ cells) Western Blot : 1:500-1:2000
Limitations	This CFL1 antibody is available for research use only.



Flow cytometry testing of human HL60 cells with CFL1 antibody; Blue=isotype control, Green= CFL1 antibody.



Western blot testing of human MCF7 cell lysate with CFL1 antibody. Predicted molecular weight ~19 kDa.



Western blot testing of human HL60 cell lysate with CFL1 antibody. Predicted molecular weight ~19 kDa.



Western blot testing of mouse NIH 3T3 cell lysate with CFL1 antibody. Predicted molecular weight ~19 kDa.



Western blot testing of 1) non-transfected and 2) transfected HEK293 cell lysate with CFL1 antibody.

Description

Cofilin is a widely distributed intracellular actin-modulating protein that binds and depolymerizes filamentous F-actin and inhibits the polymerization of monomeric G-actin in a pH-dependent manner.

Application Notes

The stated application concentrations are suggested starting points. Titration of the CFL1 antibody may be required due to differences in protocols and secondary/substrate sensitivity.

Immunogen

A portion of amino acids 70-98 from the human protein was used as the immunogen for the CFL1 antibody.

Storage

Aliquot the CFL1 antibody and store frozen at -20°C or colder. Avoid repeated freeze-thaw cycles.