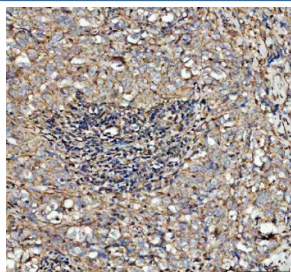


## CFD Antibody / Complement Factor D (RQ4073)

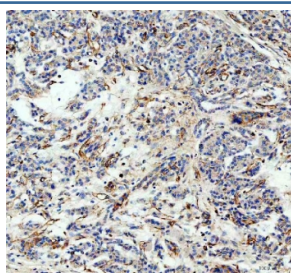
Catalog No.	Formulation	Size
RQ4073	0.5mg/ml if reconstituted with 0.2ml sterile DI water	100 ug

**Bulk quote request**

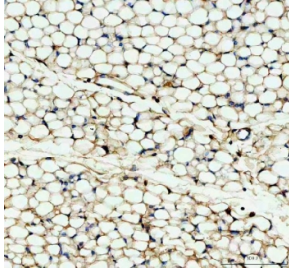
<b>Availability</b>	1-3 business days
<b>Species Reactivity</b>	Human, Mouse, Rat
<b>Format</b>	Antigen affinity purified
<b>Clonality</b>	Polyclonal (rabbit origin)
<b>Isotype</b>	Rabbit IgG
<b>Purity</b>	Antigen affinity purified
<b>Buffer</b>	Lyophilized from 1X PBS with 2% Trehalose
<b>UniProt</b>	P00746
<b>Localization</b>	Secreted
<b>Applications</b>	Western Blot : 0.5-1ug/ml Immunohistochemistry (FFPE) : 2-5ug/ml Direct ELISA : 0.1-0.5ug/ml
<b>Limitations</b>	This CFD antibody is available for research use only.



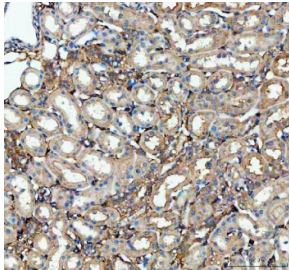
IHC staining of FFPE human breast cancer tissue with CFD antibody. Required HIER: steam section in pH8 EDTA buffer for 20 min and allow to cool prior to testing.



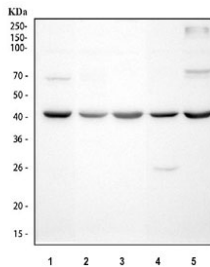
IHC staining of FFPE human pancreatic cancer tissue with CFD antibody. Required HIER: steam section in pH8 EDTA buffer for 20 min and allow to cool prior to testing.



IHC staining of FFPE mouse adipose tissue with CFD antibody. Required HIER: steam section in pH8 EDTA buffer for 20 min and allow to cool prior to testing.



IHC staining of FFPE rat kidney tissue with CFD antibody. Required HIER: steam section in pH8 EDTA buffer for 20 min and allow to cool prior to testing.



Western blot testing of 1) human ThP-1, 2) human HeLa, 3) rat lung, 4) mouse lung and 5) mouse NIH 3T3 cell lysate with CFD antibody. Predicted molecular weight ~27 kDa.

## Description

Factor D is a protein which in humans is encoded by the CFD gene. The protein encoded by this gene is a member of the trypsin family of peptidases. The encoded protein is a component of the alternative complement pathway best known for its role in humoral suppression of infectious agents. It is also a serine protease that is secreted by adipocytes into the bloodstream. And it stimulates glucose transport for triglyceride accumulation in fats cells and inhibits lipolysis. Finally, the encoded protein has a high level of expression in fat, suggesting a role for adipose tissue in immune system biology.

## Application Notes

Optimal dilution of the CFD antibody should be determined by the researcher.

## Immunogen

A recombinant human partial protein corresponding to amino acids I26-A253 was used as the immunogen for the CFD antibody.

## Storage

After reconstitution, the CFD antibody can be stored for up to one month at 4oC. For long-term, aliquot and store at -20oC. Avoid repeated freezing and thawing.

