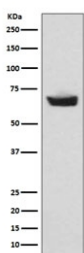


CETP Antibody / Cholesteryl Ester Transfer Protein [clone CBA-3] (RQ5370)

Catalog No.	Formulation	Size
RQ5370	Antibody in PBS with 0.02% sodium azide, 50% glycerol and 0.4-0.5mg/ml BSA	100 ul

[Bulk quote request](#)

Availability	1-2 weeks
Species Reactivity	Human
Format	Purified
Clonality	Rabbit Monoclonal
Isotype	Rabbit IgG
Clone Name	CBA-3
Purity	Affinity purified
UniProt	P11597
Applications	Western Blot : 1:500-1:2000
Limitations	This CETP antibody is available for research use only.



Western blot testing of human plasma lysate with CETP antibody. Expected molecular weight: 66-74 kDa depending on glycosylation level.

Description

The protein encoded by this gene is found in plasma, where it is involved in the transfer of cholesteryl ester from high density lipoprotein (HDL) to other lipoproteins. Defects in this gene are a cause of hyperalphalipoproteinemia 1 (HALP1). Two transcript variants encoding different isoforms have been found for this gene. [RefSeq]

Application Notes

Optimal dilution of the CETP antibody should be determined by the researcher.

Immunogen

A synthetic peptide specific to human CETP was used as the immunogen for the CETP antibody.

Storage

Store the CETP antibody at -20oC.