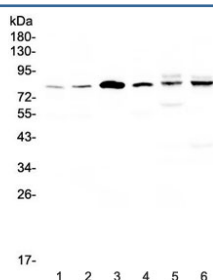


CEP68 Antibody (RQ4329)

Catalog No.	Formulation	Size
RQ4329	0.5mg/ml if reconstituted with 0.2ml sterile DI water	100 ug

Bulk quote request

Availability	1-3 business days
Species Reactivity	Human, Mouse, Rat
Format	Antigen affinity purified
Clonality	Polyclonal (rabbit origin)
Isotype	Rabbit IgG
Purity	Antigen affinity purified
Buffer	Lyophilized from 1X PBS with 2% Trehalose and 0.025% sodium azide
UniProt	Q76N32
Localization	Cytoplasm, cytoskeleton
Applications	Western Blot : 0.5-1ug/ml
Limitations	This CEP68 antibody is available for research use only.



Western blot testing of human 1) HeLa, 2) COLO-320, 3) SK-O-V3, 4) Jurkat, 5) rat heart and 6) mouse heart lysate with CEP68 antibody at 0.5ug/ml. Predicted molecular weight ~81 kDa (isoform 1), ~67 kDa (isoform 2).

Description

Centrosomal protein of 68 kDa is a protein that in humans is encoded by the CEP68 gene. It is mapped to chromosome 2. CEP68 is required for centrosome cohesion. It decorates fibres emanating from the proximal ends of centrioles. CEP68 and Rootletin depend both on each other for centriole association, and both also require CEP250 for their function.

Application Notes

Optimal dilution of the CEP68 antibody should be determined by the researcher.

Immunogen

Amino acids ELICWLYNVADVTDHGTAARSNLTSLKSSLQLYRQFKKDID were used as the immunogen for the CEP68 antibody.

Storage

After reconstitution, the CEP68 antibody can be stored for up to one month at 4°C. For long-term, aliquot and store at -20°C. Avoid repeated freezing and thawing.