

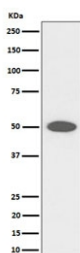
## CEP43 Antibody / Centrosomal protein 43 [clone 29F39] (RQ8696)

Catalog No.	Formulation	Size
RQ8696	Antibody in PBS with 0.02% sodium azide, 50% glycerol and 0.4-0.5mg/ml BSA	100 ul

Recombinant RABBIT MONOCLONAL

[Bulk quote request](#)

Availability	1-3 days
Species Reactivity	Human
Format	Purified
Clonality	Recombinant Rabbit Monoclonal
Isotype	Rabbit IgG
Clone Name	29F39
Purity	Affinity chromatography
UniProt	O95684
Applications	Western Blot : 1:500-1:2000
Limitations	This CEP43 antibody is available for research use only.



Western blot testing of human HeLa cell lysate with CEP43 antibody. Predicted molecular weight ~43 kDa.

### Description

CEP43 is required for anchoring microtubules to the centrosomes and for ciliation. [UniProt]

### Application Notes

Optimal dilution of the CEP43 antibody should be determined by the researcher.

### Immunogen

A synthetic peptide specific to human CEP43 protein was used as the immunogen for the CEP43 antibody.

## Storage

Store the CEP43 antibody at -20oC.