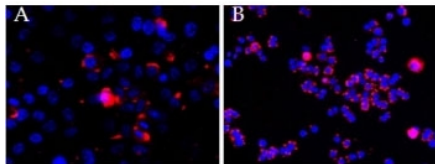


CEP290 Antibody (R35700)

Catalog No.	Formulation	Size
R35700-100UG	0.5 mg/ml in 1X TBS, pH7.3, with 0.5% BSA (US sourced) and 0.02% sodium azide	100 ug

[Bulk quote request](#)

Availability	1-3 business days
Species Reactivity	Human
Format	Antigen affinity purified
Host	Goat
Clonality	Polyclonal (goat origin)
Isotype	Goat Ig
Purity	Antigen affinity
Gene ID	80184
Applications	Immunohistochemistry (FFPE) : 3-5ug/ml ELISA (peptide) LOD : 1:128000
Limitations	This CEP290 antibody is available for research use only.



CEP290 antibody (2.5ug/ml) overnight staining of cell lines OPCT-1 [A] and MDA468 [B] with Alexa Fluor 568 [red] and nuclear counter staining with DAPI [blue].

Description

Additional name(s) for this target protein: Centrosomal protein 290kDa

Application Notes

Optimal dilution of the CEP290 antibody should be determined by the researcher.

1. This CEP290 is not recommended for testing of mouse samples.

Immunogen

Amino acids RNSKHLKQQYRAEN were used as the immunogen for this CEP290 antibody.

Storage

Aliquot and store the CEP290 antibody at -20oC.