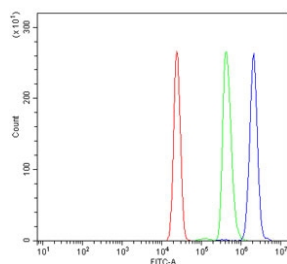


## CENPI Antibody / Centromere protein I (RQ7043)

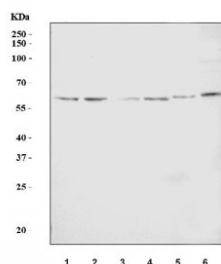
Catalog No.	Formulation	Size
RQ7043	0.5mg/ml if reconstituted with 0.2ml sterile DI water	100 ug

**Bulk quote request**

<b>Availability</b>	1-3 business days
<b>Species Reactivity</b>	Human, Mouse, Rat
<b>Format</b>	Antigen affinity purified
<b>Clonality</b>	Polyclonal (rabbit origin)
<b>Isotype</b>	Rabbit IgG
<b>Purity</b>	Antigen affinity purified
<b>Buffer</b>	Lyophilized from 1X PBS with 2% Trehalose
<b>UniProt</b>	Q92674
<b>Applications</b>	Western Blot : 0.5-1 ug/ml Flow Cytometry : 1-3ug/million cells Direct ELISA : 0.1-0.5ug/ml
<b>Limitations</b>	This CENPI antibody is available for research use only.



Flow cytometry testing of human U937 cells with CENPI antibody at 1ug/million cells (blocked with goat sera); Red=cells alone, Green=isotype control, Blue= CENPI antibody.



Western blot testing of 1) human 293T, 2) human HeLa, 3) human Jurkat, 4) human MCF7, 5) rat PC-12 and 6) mouse NIH 3T3 cell lysate with CENPI antibody. Predicted molecular weight: ~87 kDa (isoform 1) and ~60 kDa (isoform 2).

## Description

Centromere protein I is a protein that in humans is encoded by the CENPI gene. This gene encodes a centromere protein that is a component of the CENPA-NAC (nucleosome-associated) complex. This complex is critical for accurate chromosome alignment and segregation and it ensures proper mitotic progression. This protein regulates the recruitment of kinetochore-associated proteins that are required to generate the spindle checkpoint signal. The product of this gene is involved in the response of gonadal tissues to follicle-stimulating hormone. Mutations in this gene may be involved in human X-linked disorders of gonadal development and gametogenesis. Alternate splicing results in multiple transcript variants. A pseudogene of this gene is found on chromosome 13.

## Application Notes

Optimal dilution of the CENPI antibody should be determined by the researcher.

## Immunogen

Recombinant human CENPI protein (amino acids K120-C604) was used as the immunogen for the CENPI antibody.

## Storage

After reconstitution, the CENPI antibody can be stored for up to one month at 4°C. For long-term, aliquot and store at -20°C. Avoid repeated freezing and thawing.