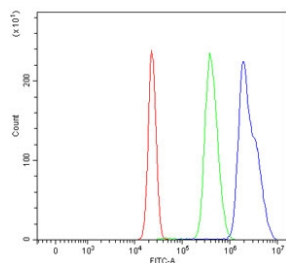


CENPF Antibody / Centromere protein F (RQ7333)

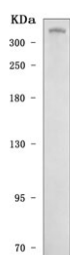
Catalog No.	Formulation	Size
RQ7333	0.5mg/ml if reconstituted with 0.2ml sterile DI water	100 ug

Bulk quote request

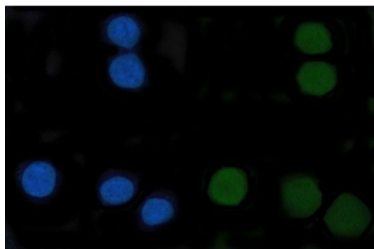
Availability	1-3 business days
Species Reactivity	Human
Format	Antigen affinity purified
Clonality	Polyclonal (rabbit origin)
Isotype	Rabbit IgG
Purity	Antigen affinity purified
Buffer	Lyophilized from 1X PBS with 2% Trehalose
UniProt	P49454
Applications	Western Blot : 0.5-1ug/ml Immunofluorescence : 5ug/ml Flow Cytometry : 1-3ug/million cells Direct ELISA : 0.1-0.5ug/ml
Limitations	This CENPF antibody is available for research use only.



Flow cytometry testing of human HepG2 cells with CENPF antibody at 1ug/million cells (blocked with goat sera); Red=cells alone, Green=isotype control, Blue= CENPF antibody.



Western blot testing of human HeLa cell lysate with CENPF antibody. Predicted molecular weight ~358 kDa.



Immunofluorescent staining of FFPE human SiHa cells with CENPF antibody (green) and DAPI nuclear stain (blue). HIER: steam section in pH6 citrate buffer for 20 min.

Description

Centromere protein F is a protein that in humans is encoded by the CENPF gene. This gene encodes a protein that associates with the centromere-kinetochore complex. The protein is a component of the nuclear matrix during the G2 phase of interphase. In late G2 the protein associates with the kinetochore and maintains this association through early anaphase. It localizes to the spindle midzone and the intracellular bridge in late anaphase and telophase, respectively, and is thought to be subsequently degraded. The localization of this protein suggests that it may play a role in chromosome segregation during mitosis. It is thought to form either a homodimer or heterodimer. Autoantibodies against this protein have been found in patients with cancer or graft versus host disease.

Application Notes

Optimal dilution of the CENPF antibody should be determined by the researcher.

Immunogen

Recombinant human protein (amino acids Q129-R3078) was used as the immunogen for the CENPF antibody.

Storage

After reconstitution, the CENPF antibody can be stored for up to one month at 4°C. For long-term, aliquot and store at -20°C. Avoid repeated freezing and thawing.