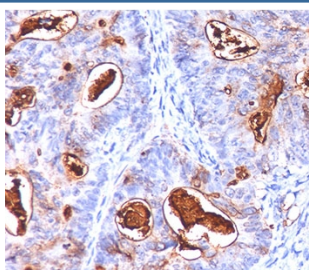


CEA Antibody Cocktail / CEACAM5 [clone COL-1 + CEA31 + C66/261] (V2090)

Catalog No.	Formulation	Size
V2090-100UG	0.2 mg/ml in 1X PBS with 0.1 mg/ml BSA (US sourced) and 0.05% sodium azide	100 ug
V2090-20UG	0.2 mg/ml in 1X PBS with 0.1 mg/ml BSA (US sourced) and 0.05% sodium azide	20 ug
V2090SAF-100UG	1 mg/ml in 1X PBS; BSA free, sodium azide free	100 ug
V2090IHC-7ML	Prediluted in 1X PBS with 0.1 mg/ml BSA (US sourced) and 0.05% sodium azide; *For IHC use only*	7 ml

[Bulk quote request](#)

Species Reactivity	Human
Format	Purified
Clonality	Monoclonal (mouse origin)
Isotype	Mouse IgG2a, kappa + Mouse IgG1, kappa
Clone Name	COL-1 + CEA31 + C66/261
Purity	Protein G affinity chromatography
Buffer	1X PBS, pH 7.4
UniProt	P06731
Localization	Cytoplasmic and luminal surface
Applications	Immunohistochemistry (FFPE) : 0.25-0.5ug/ml for 30 min at RT (1) (2)
Limitations	This CEA antibody is available for research use only.



IHC testing of human colon carcinoma stained with CEA antibody cocktail (COL-1 + CEA31 + C66/261).

Description

This antibody cocktail recognizes proteins of 80-200kDa, identified as different members of the CEA (Carcinoembryonic Antigen) family. CEA is synthesized during development in the fetal gut and is re-expressed in increased amounts in intestinal carcinomas and several other tumors. This antibody does not react with nonspecific cross-reacting antigen (NCA) and with human polymorphonuclear leucocytes. The antibody cocktail shows no reaction with a variety of normal tissues and is suitable for staining of formalin/paraffin tissues. CEA is not found in benign glands, stroma, or malignant prostatic cells. antibody to CEA is useful in detecting early foci of gastric carcinoma and in distinguishing pulmonary adenocarcinomas (60-70% are CEA+) from pleural mesotheliomas (rarely or weakly CEA+). CEA antibody positivity is seen in adenocarcinomas from the lung, colon, stomach, esophagus, pancreas, gallbladder, urachus, salivary gland, ovary, and endocervix.

Application Notes

Immunogen

Human colon carcinoma extract (COL-1 & CEA31) and CEA recombinant protein (C66/261) were used as the immunogen for this antibody cocktail.

Storage

Store the CEA antibody cocktail at 2-8oC (with azide) or aliquot and store at -20oC or colder (without azide).

Alternate Names

Carcinoembryonic Antigen-related Cell Adhesion Molecule 5, CEACAM5, CD66, Biliary Glycoprotein (BGP-1), CEA antibody

References (4)