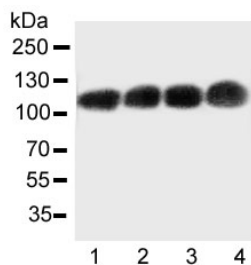


CEA Antibody / CEACAM5 [clone C6G9] (R30022)

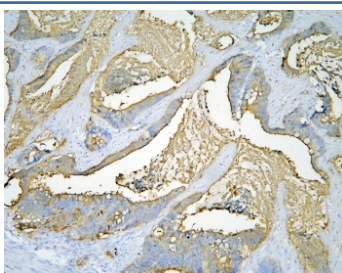
Catalog No.	Formulation	Size
R30022	0.5mg/ml if reconstituted with 0.2ml sterile DI water	100 ug

Bulk quote request

Availability	1-3 business days
Species Reactivity	Human
Format	Ascites
Clonality	Monoclonal (mouse origin)
Isotype	Mouse IgG1
Clone Name	C6G9
Purity	Ascites
Buffer	Lyophilized from mouse ascites fluid with 2.5% BSA and 0.025% sodium azide
Gene ID	634
Applications	Western Blot : 0.5-1ug/ml IHC (FFPE) : 0.5-2ug/ml
Limitations	This CEA antibody is available for research use only.



Western blot testing of CEA antibody and Lane 1: Recombinant human CEA protein 10ng; Lane 2: 5ng; 3: 2.5ng; 4: 1.25ng



IHC staining of FFPE human intestinal cancer with CEA antibody at 1ug/ml. HIER: boil tissue sections in pH6, 10mM citrate buffer, for 10-20 min and allow to cool before testing.

Description

Carcinoembryonic antigen is a complex immunoreactive glycoprotein with a molecular weight of 180,000 comprising 60% carbohydrate. It is found in adenocarcinomas of endodermally derived digestive system epithelia and in fetal colon. Carcinoembryonic antigen is one of the most widely used tumor markers in serum immunoassay determinations of carcinoma.

Application Notes

The stated application concentrations are suggested starting amounts. Titration of the CEA antibody may be required due to differences in protocols and secondary/substrate sensitivity.

Immunogen

Carcinoembryonic antigen isolated from a human colon adenocarcinoma cell line was used as the immunogen for this CEA antibody.

Storage

The CEA antibody can be stored for up to one month at 4°C. For long-term, aliquot and store at -20°C. Avoid repeated freezing and thawing.