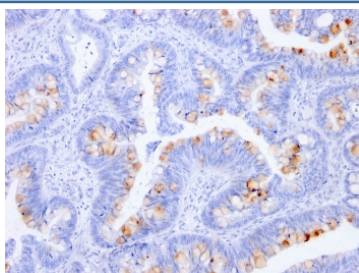


CEA Antibody / CEACAM5 [clone C66/1291] (V3527)

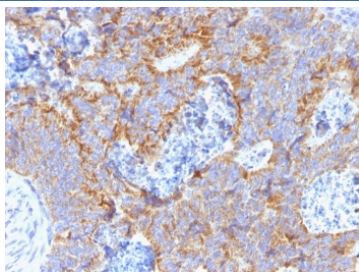
Catalog No.	Formulation	Size
V3527-100UG	0.2 mg/ml in 1X PBS with 0.1 mg/ml BSA (US sourced) and 0.05% sodium azide	100 ug
V3527-20UG	0.2 mg/ml in 1X PBS with 0.1 mg/ml BSA (US sourced) and 0.05% sodium azide	20 ug
V3527SAF-100UG	1 mg/ml in 1X PBS; BSA free, sodium azide free	100 ug

Bulk quote request

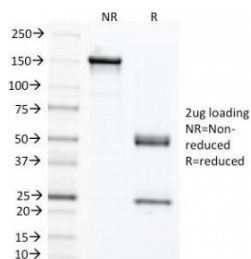
Availability	1-3 business days
Species Reactivity	Human
Format	Purified
Clonality	Monoclonal (mouse origin)
Isotype	Mouse IgG1
Clone Name	C66/1291
Purity	Protein G affinity chromatography
UniProt	P06731
Localization	Cytoplasmic and luminal surface
Applications	ELISA (order BSA/sodium Azide-free Format For Coating) : Immunohistochemistry (FFPE) : 1-2ug/ml for 30 min at RT (1) (2)
Limitations	This CEA antibody is available for research use only.



IHC staining of FFPE human colon with CEA antibody (clone C66/1291). HIER: boil tissue sections in pH 9 10mM Tris with 1mM EDTA for 10-20 min and allow to cool before testing.



IHC staining of FFPE human colon with CEA antibody (clone C66/1291). HIER: boil tissue sections in pH 9 10mM Tris with 1mM EDTA for 10-20 min and allow to cool before testing.



SDS-PAGE analysis of purified, BSA-free CEA antibody (clone C66/1291) as confirmation of integrity and purity.

Description

This antibody recognizes proteins of 80-200kDa, identified as different members of CEA family. CEA is synthesized during development in the fetal gut and is re-expressed in increased amounts in intestinal carcinomas and several other tumors. This mAb reacts with nonspecific cross-reacting antigen (NCA). It shows no reaction with a variety of normal tissues and is suitable for staining of formalin/paraffin tissues. CEA is not found in benign glands, stroma, or malignant prostatic cells. Antibody to CEA is useful in detecting early foci of gastric carcinoma and in distinguishing pulmonary adenocarcinomas (60-70% are CEA+) from pleural mesotheliomas (rarely or weakly CEA+). Anti-CEA positivity is seen in adenocarcinomas from the lung, colon, stomach, esophagus, pancreas, gallbladder, urachus, salivary gland, ovary, and endocervix.

Application Notes

Optimal dilution of the CEA antibody to be determined by the researcher.

Immunogen

Purified full length human protein was used as the immunogen for the CEA antibody.

Storage

Store the CEA antibody at 2-8°C (with azide) or aliquot and store at -20°C or colder (without azide).