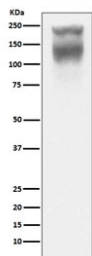


## CEA Antibody / CEACAM5 [clone AAOA-3] (RQ5159)

Catalog No.	Formulation	Size
RQ5159	Antibody in PBS with 0.02% sodium azide, 50% glycerol and 0.4-0.5mg/ml BSA	100 ul

[Bulk quote request](#)

<b>Availability</b>	1-2 weeks
<b>Species Reactivity</b>	Human
<b>Format</b>	Purified
<b>Host</b>	Rabbit
<b>Clonality</b>	Rabbit Monoclonal
<b>Isotype</b>	Rabbit IgG
<b>Clone Name</b>	AAOA-3
<b>Purity</b>	Affinity purified
<b>UniProt</b>	P06731
<b>Applications</b>	Western Blot : 1:500-1:2000
<b>Limitations</b>	This CEA antibody is available for research use only.



Western blot testing of human colon cancer lysate with CEA antibody. Expected molecular weight: 80~200 kDa depending on glycosylation level.

### Description

This gene encodes a cell surface glycoprotein that represents the founding member of the carcinoembryonic antigen (CEA) family of proteins. The encoded protein is used as a clinical biomarker for gastrointestinal cancers and may promote tumor development through its role as a cell adhesion molecule. [RefSeq]

### Application Notes

Optimal dilution of the CEA antibody should be determined by the researcher.

## **Immunogen**

A synthetic peptide specific to human CEA / Carcinoembryonic Antigen was used as the immunogen for the CEA antibody.

## **Storage**

Store the CEA antibody at -20oC.