

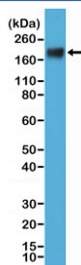
CEA Antibody / Carcinoembryonic Antigen [clone RM326] (R20351)

| Catalog No. | Formulation | Size |
|--------------|--|--------|
| R20351-0.1ML | Antibody in PBS with 50% glycerol, 1% BSA and 0.09% sodium azide | 100 ul |

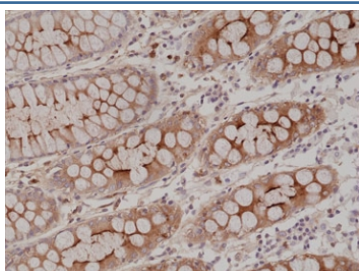
Recombinant **RABBIT MONOCLONAL**

[Bulk quote request](#)

| | |
|--------------------|--|
| Availability | 1-3 business days |
| Species Reactivity | Human |
| Format | Purified |
| Clonality | Recombinant Rabbit Monoclonal |
| Isotype | Rabbit IgG |
| Clone Name | RM326 |
| Purity | Protein A purified from animal origin-free supernatant |
| UniProt | P06731 |
| Localization | Cytoplasmic and luminal surface |
| Applications | Immunohistochemistry (FFPE) : 1:1000-1:2000 Western Blot : 1:1000-1:2000 ELISA : 1:1000-1:5000 |
| Limitations | This recombinant CEA antibody is available for research use only. |



Western blot testing of human MCF7 cell lysate with recombinant CEA antibody at 1:000. Expected molecular weight: 80–200 kDa depending on glycosylation level.



IHC staining of FFPE human colon tissue with recombinant CEA antibody at 1:2000.

Description

This antibody reacts to human CEA (Carcinoembryonic Antigen, CD66e).

Application Notes

The stated application concentrations are suggested starting points. Titration of the recombinant CEA antibody may be required due to differences in protocols and secondary/substrate sensitivity.

Immunogen

Native Carcinoembryonic Antigen protein purified from human liver tissue was used as the immunogen for the recombinant CEA antibody.

Storage

Store the recombinant CEA antibody at -20oC.