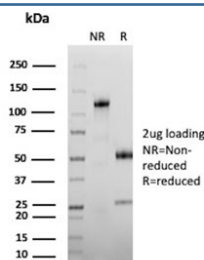


CEA Antibody / Carcinoembryonic Antigen [clone C66/1292] (V8890)

Catalog No.	Formulation	Size
V8890-100UG	0.2 mg/ml in 1X PBS with 0.1 mg/ml BSA (US sourced), 0.05% sodium azide	100 ug
V8890-20UG	0.2 mg/ml in 1X PBS with 0.1 mg/ml BSA (US sourced), 0.05% sodium azide	20 ug
V8890SAF-100UG	1 mg/ml in 1X PBS; BSA free, sodium azide free	100 ug

[Bulk quote request](#)

Availability	1-3 business days
Species Reactivity	Human
Format	Purified
Host	Mouse
Clonality	Monoclonal (mouse origin)
Isotype	Mouse IgG2b
Clone Name	C66/1292
Purity	Protein A/G affinity
UniProt	P06731
Localization	Cytoplasmic and luminal surface
Applications	Flow Cytometry : 0.5-1ug/million cells Immunofluorescence : 1-2ug/ml
Limitations	This CEA antibody is available for research use only.



SDS-PAGE analysis of purified, BSA-free CEA antibody (clone C66/1292) as confirmation of integrity and purity.

Description

This antibody recognizes proteins of 80-200kDa, identified as different members of CEA family. CEA is synthesized

during development in the fetal gut and is re-expressed in increased amounts in intestinal carcinomas and several other tumors. This MAb does not react with nonspecific cross-reacting antigen (NCA) and with human polymorphonuclear leucocytes. It shows no reaction with a variety of normal tissues and is suitable for staining of formalin/paraffin tissues. CEA is not found in benign glands, stroma, or malignant prostatic cells. Antibody to CEA is useful in detecting early foci of gastric carcinoma and in distinguishing pulmonary adenocarcinomas (60-70% are CEA+) from pleural mesotheliomas (rarely or weakly CEA+). Anti-CEA positivity is seen in adenocarcinomas from the lung, colon, stomach, esophagus, pancreas, gallbladder, urachus, salivary gland, ovary, and endocervix.

Application Notes

Optimal dilution of the CEA antibody should be determined by the researcher.

Immunogen

Recombinant full-length human CEA protein was used as the immunogen for the CEA antibody.

Storage

Aliquot the CEA antibody and store frozen at -20oC or colder. Avoid repeated freeze-thaw cycles.