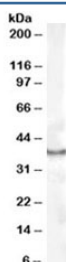


CDX2 Antibody (R33936)

Catalog No.	Formulation	Size
R33936-100UG	0.5 mg/ml in 1X TBS, pH7.3, with 0.5% BSA (US sourced) and 0.02% sodium azide	100 ug

[Bulk quote request](#)

Availability	1-3 business days
Species Reactivity	Human
Predicted Reactivity	Dog, Mouse, Rat
Format	Antigen affinity purified
Clonality	Polyclonal (goat origin)
Isotype	Goat Ig
Purity	Antigen affinity
Gene ID	1045
Applications	Western Blot : 1-3ug/ml ELISA (peptide) LOD : 1:4000
Limitations	This CDX2 antibody is available for research use only.



Western blot testing of human kidney lysate with CDX2 antibody at 1ug/ml. Predicted molecular weight: 33-40 kDa.

Description

Additional name(s) for this target protein: Caudal type homeo box transcription factor 2

Application Notes

Optimal dilution of the CDX2 antibody should be determined by the researcher.

Immunogen

Amino acids EQLSPGGQRRNLCE were used as the immunogen for this CDX2 antibody.

Storage

Aliquot and store the CDX2 antibody at -20oC.