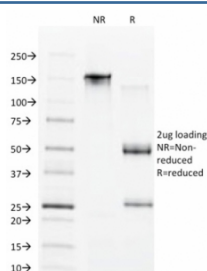


CDX1 Antibody [clone CDX1/1650] (V5555)

Catalog No.	Formulation	Size
V5555-100UG	0.2 mg/ml in 1X PBS with 0.1 mg/ml BSA (US sourced), 0.05% sodium azide	100 ug
V5555-20UG	0.2 mg/ml in 1X PBS with 0.1 mg/ml BSA (US sourced), 0.05% sodium azide	20 ug
V5555SAF-100UG	1 mg/ml in 1X PBS; BSA free, sodium azide free	100 ug

[Bulk quote request](#)

Availability	1-3 business days
Species Reactivity	Human
Format	Purified
Host	Mouse
Clonality	Monoclonal (mouse origin)
Isotype	Mouse IgG1, kappa
Clone Name	CDX1/1650
Purity	Protein A/G affinity
UniProt	P47902
Localization	Nucleus
Applications	Immunohistochemistry (FFPE) : 1-2ug/ml
Limitations	This CDX1 antibody is available for research use only.



SDS-PAGE analysis of purified, BSA-free CDX1 antibody (clone CDX1/1650) as confirmation of integrity and purity.

Description

The members of the murine Cdx family (Cdx1, Cdx2, and Cdx4) are members of the caudal-type homeobox family of genes, which are homologues of the Drosophila caudal gene required for anterior-posterior regional identity. The intestine-

specific transcription factors Cdx1 and Cdx2 are candidate genes for directing intestinal development, differentiation, proliferation and maintenance of the intestinal phenotype. The relative expression of Cdx1 to Cdx2 protein may be important in the anterior to posterior patterning of the intestinal epithelium and in defining patterns of proliferation and differentiation along the crypt-villus axis. Expression of the Cdx1 homeobox gene in epithelial intestinal cells promotes cellular growth and differentiation. Cdx1 positively regulates its own expression. Cdx1 and Cdx2 are expressed in the small intestine and colon of fetus and adult. A decrease in human Cdx1 and/or Cdx2 expression is associated with colorectal tumorigenesis. Both Cdx1 and Cdx2 genes must be expressed to reduce tumorigenic potential, to increase sensitivity to apoptosis and to reduce cell migration, suggesting that the two genes control the normal phenotype by independent pathways. The human Cdx1 gene maps to chromosome 5q32 and encodes a 265-amino acid protein.

Application Notes

Optimal dilution of the CDX1 antibody should be determined by the researcher.

Immunogen

Recombinant human full-length CDX1 protein was used as the immunogen for the CDX1 antibody.

Storage

Aliquot the CDX1 antibody and store frozen at -20oC or colder. Avoid repeated freeze-thaw cycles.