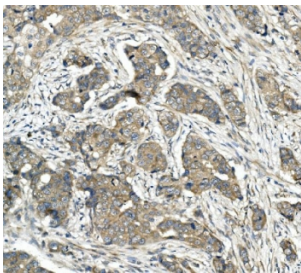


CDR2 Antibody (RQ5966)

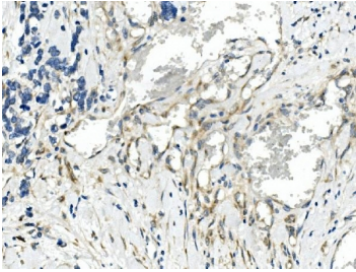
Catalog No.	Formulation	Size
RQ5966	0.5mg/ml if reconstituted with 0.2ml sterile DI water	100 ug

Bulk quote request

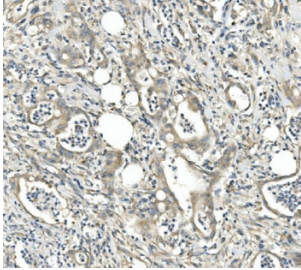
Availability	1-3 business days
Species Reactivity	Human
Format	Antigen affinity purified
Host	Rabbit
Clonality	Polyclonal (rabbit origin)
Isotype	Rabbit IgG
Purity	Affinity purified
Buffer	Lyophilized from 1X PBS with 2% Trehalose and 0.025% sodium azide
UniProt	Q01850
Localization	Cytoplasmic
Applications	Western Blot : 0.5-1ug/ml Immunohistochemistry : 1-2ug/ml Flow Cytometry : 1-3ug/million cells Direct ELISA : 0.1-0.5ug/ml
Limitations	This CDR2 antibody is available for research use only.



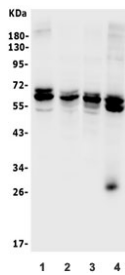
IHC staining of FFPE human breast cancer with CDR2 antibody. HIER: boil tissue sections in pH8 EDTA for 20 min and allow to cool before testing.



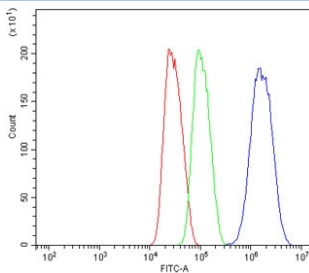
IHC staining of FFPE human lung cancer with CDR2 antibody. HIER: boil tissue sections in pH8 EDTA for 20 min and allow to cool before testing.



IHC staining of FFPE human rectal cancer with CDR2 antibody. HIER: boil tissue sections in pH8 EDTA for 20 min and allow to cool before testing.



Western blot testing of human 1) HeLa, 2) Caco-2, 3) HEK293 and 4) A549 lysate with CDR2 antibody. Expected molecular weight: 52-62 kDa.



Flow cytometry testing of human HepG2 cells with CDR2 antibody at 1ug/million cells (blocked with goat sera); Red=cells alone, Green=isotype control, Blue= CDR2 antibody.

Description

Cerebellar degeneration-related protein 2 is a protein that in humans is encoded by the CDR2 gene. By a combination of study of rodent/human somatic cell hybrids and in situ hybridization, this gene is assigned to 16p13.1-p12. The onconeural cerebellar degeneration-related antigen Cdr2 is associated with paraneoplastic syndromes. Neoplastic expression of Cdr2 in ovary and breast tumors triggers an autoimmune response that suppresses tumor growth by developing tumor immunity, but culminates in cerebellar degeneration when Cdr2-specific immune cells recognize neuronal Cdr2.

Application Notes

Optimal dilution of the CDR2 antibody should be determined by the researcher.

Immunogen

Recombinant human protein (amino acids M1-D441) was used as the immunogen for the CDR2 antibody.

Storage

After reconstitution, the CDR2 antibody can be stored for up to one month at 4°C. For long-term, aliquot and store at

-20oC. Avoid repeated freezing and thawing.