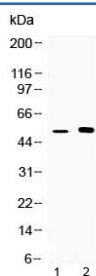


CDR2 Antibody (R32756)

Catalog No.	Formulation	Size
R32756	0.5mg/ml if reconstituted with 0.2ml sterile DI water	100 ug

[Bulk quote request](#)

Availability	1-3 business days
Species Reactivity	Human, Mouse
Format	Antigen affinity purified
Host	Rabbit
Clonality	Polyclonal (rabbit origin)
Isotype	Rabbit IgG
Purity	Antigen affinity
Buffer	Lyophilized from 1X PBS with 2.5% BSA, 0.025% sodium azide
UniProt	Q01850
Applications	Western Blot : 0.5-1ug/ml
Limitations	This CDR2 antibody is available for research use only.



Western blot testing of 1) mouse kidney and 2) human MCF7 lysate with CDR2 antibody at 0.5ug/ml. Expected molecular weight: 52-62 kDa.

Description

Cerebellar degeneration-related protein 2 is a protein that in humans is encoded by the CDR2 gene. By a combination of study of rodent/human somatic cell hybrids and in situ hybridization, this gene is assigned to 16p13.1-p12. The onconeural cerebellar degeneration-related antigen Cdr2 is associated with paraneoplastic syndromes. Neoplastic expression of Cdr2 in ovary and breast tumors triggers an autoimmune response that suppresses tumor growth by developing tumor immunity, but culminates in cerebellar degeneration when Cdr2-specific immune cells recognize neuronal Cdr2.

Application Notes

Optimal dilution of the CDR2 antibody should be determined by the researcher.

Immunogen

Amino acids 232-2656 (ELEQQLGATGAYRARALELEAEVAEMRQMLQSEH) from the human protein were used as the immunogen for the CDR2 antibody.

Storage

After reconstitution, the CDR2 antibody can be stored for up to one month at 4oC. For long-term, aliquot and store at -20oC. Avoid repeated freezing and thawing.