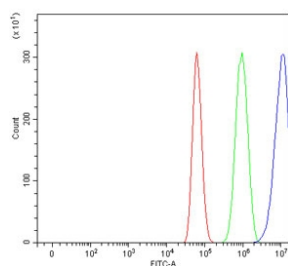


CDKN2D Antibody / p19-INK4d (RQ6844)

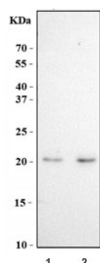
Catalog No.	Formulation	Size
RQ6844	0.5mg/ml if reconstituted with 0.2ml sterile DI water	100 ug

Bulk quote request

Availability	1-3 business days
Species Reactivity	Human
Format	Antigen affinity purified
Host	Rabbit
Clonality	Polyclonal (rabbit origin)
Isotype	Rabbit IgG
Purity	Antigen affinity purified
Buffer	Lyophilized from 1X PBS with 2% Trehalose
UniProt	P55273
Applications	Western Blot : 1-2ug/ml Flow Cytometry : 1-3ug/million cells Direct ELISA : 0.1-0.5ug/ml
Limitations	This CDKN2D antibody is available for research use only.



Flow cytometry testing of human U-87 MG cells with CDKN2D antibody at 1ug/million cells (blocked with goat sera); Red=cells alone, Green=isotype control, Blue= CDKN2D antibody.



Western blot testing of human 1) MOLT4 and 2) HEL cell lysate with CDKN2D antibody. Predicted molecular weight ~18 kDa.

Description

Cyclin-dependent kinase 4 inhibitor D is an enzyme that in humans is encoded by the CDKN2D gene. The protein encoded by this gene is a member of the INK4 family of cyclin-dependent kinase inhibitors. This protein has been shown to form a stable complex with CDK4 or CDK6, and prevent the activation of the CDK kinases, thus function as a cell growth regulator that controls cell cycle G1 progression. The abundance of the transcript of this gene was found to oscillate in a cell-cycle dependent manner with the lowest expression at mid G1 and a maximal expression during S phase. The negative regulation of the cell cycle involved in this protein was shown to participate in repressing neuronal proliferation, as well as spermatogenesis. Two alternatively spliced variants of this gene, which encode an identical protein, have been reported.

Application Notes

Optimal dilution of the CDKN2D antibody should be determined by the researcher.

Immunogen

Recombinant human protein (amino acids E31-H132) was used as the immunogen for the CDKN2D antibody.

Storage

After reconstitution, the CDKN2D antibody can be stored for up to one month at 4oC. For long-term, aliquot and store at -20oC. Avoid repeated freezing and thawing.