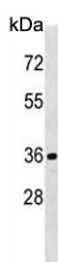


CDKL1 Antibody (F54936)

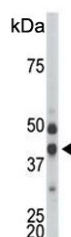
Catalog No.	Formulation	Size
F54936-0.4ML	In 1X PBS, pH 7.4, with 0.09% sodium azide	0.4 ml
F54936-0.08ML	In 1X PBS, pH 7.4, with 0.09% sodium azide	0.08 ml

[Bulk quote request](#)

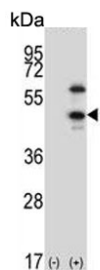
Availability	1-3 business days
Species Reactivity	Human, Mouse
Format	Purified
Clonality	Polyclonal (rabbit origin)
Isotype	Rabbit Ig
Purity	Antigen affinity purified
UniProt	Q00532
Localization	Cytoplasmic, nuclear
Applications	Western Blot : 1:500-1:1000 Immunohistochemistry (FFPE) : 1:50-1:100
Limitations	This CDKL1 antibody is available for research use only.



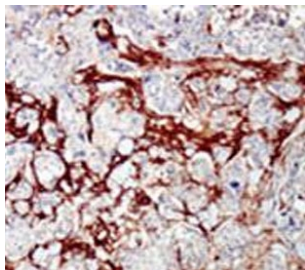
Western blot testing of human HEK293 cell lysate with CDKL1 antibody. Predicted molecular weight ~42 kDa.



Western blot testing of mouse kidney tissue lysate with CDKL1 antibody. Predicted molecular weight ~42 kDa.



Western blot testing of 1) non-transfected and 2) transfected 293 cell lysate with CDKL1 antibody.



IHC testing of FFPE human cancer tissue with CDKL1 antibody. HIER: steam section in pH6 citrate buffer for 20 min and allow to cool prior to staining.

Description

This gene product is a member of a large family of CDC2-related serine/threonine protein kinases. It accumulates primarily in the nucleus. Alternative splice variants encoding different protein isoforms have been described, but their full-length nature has not been determined.

Application Notes

The stated application concentrations are suggested starting points. Titration of the CDKL1 antibody may be required due to differences in protocols and secondary/substrate sensitivity.

Immunogen

A portion of amino acids 285-316 from the human protein was used as the immunogen for the CDKL1 antibody.

Storage

Aliquot the CDKL1 antibody and store frozen at -20oC or colder. Avoid repeated freeze-thaw cycles.