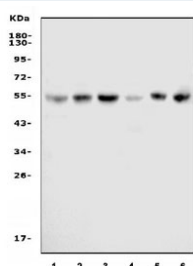


CDK8 Antibody (RQ4676)

Catalog No.	Formulation	Size
RQ4676	0.5mg/ml if reconstituted with 0.2ml sterile DI water	100 ug

Bulk quote request

Availability	1-3 business days
Species Reactivity	Human
Format	Antigen affinity purified
Clonality	Polyclonal (rabbit origin)
Isotype	Rabbit IgG
Purity	Antigen affinity
Buffer	Lyophilized from 1X PBS with 2% Trehalose
UniProt	P49336
Localization	Cell membrane
Applications	Western Blot : 0.5-1ug/ml
Limitations	This CDK8 antibody is available for research use only.



Western blot testing of human 1) HeLa, 2) K562, 3) Jurkat, 4) HL60, 5) Caco-2 and 6) HEK293 cell lysate with CDK8 antibody at 0.5ug/ml. Predicted molecular weight ~53 kDa.

Description

Cell division protein kinase 8 is an enzyme that in humans is encoded by the CDK8 gene. It is mapped to 13q12.13. This gene encodes a member of the cyclin-dependent protein kinase (CDK) family. CDK family members are known to be important regulators of cell cycle progression. This kinase and its regulatory subunit, cyclin C, are components of the Mediator transcriptional regulatory complex, involved in both transcriptional activation and repression by phosphorylation of the carboxy-terminal domain of the largest subunit of RNA polymerase II. This kinase regulates transcription by targeting the cyclin-dependent kinase 7 subunits of the general transcription initiation factor IIH, thus providing a link between the Mediator complex and the basal transcription machinery. Multiple pseudogenes of this gene have been

identified. Alternative splicing results in multiple transcript variants.

Application Notes

The stated application concentrations are suggested starting amounts. Titration of the CDK8 antibody may be required due to differences in protocols and secondary/substrate sensitivity.

Immunogen

An amino acids 355-464 from the human protein were used as the immunogen for this CDK8 antibody.

Storage

After reconstitution, the CDK8 antibody can be stored for up to one month at 4oC. For long-term, aliquot and store at -20oC. Avoid repeated freezing and thawing.