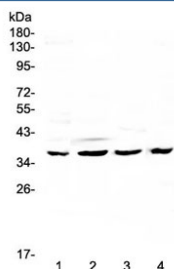


## Cdk6 Antibody (RQ4440)

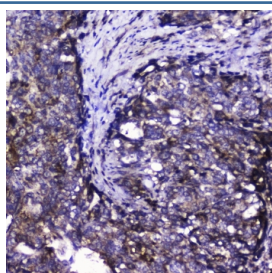
Catalog No.	Formulation	Size
RQ4440	0.5mg/ml if reconstituted with 0.2ml sterile DI water	100 ug

**Bulk quote request**

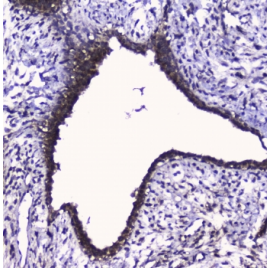
<b>Availability</b>	1-3 business days
<b>Species Reactivity</b>	Human, Mouse
<b>Format</b>	Antigen affinity purified
<b>Clonality</b>	Polyclonal (rabbit origin)
<b>Isotype</b>	Rabbit IgG
<b>Purity</b>	Antigen affinity
<b>Buffer</b>	Lyophilized from 1X PBS with 2% Trehalose and 0.025% sodium azide
<b>UniProt</b>	Q00534
<b>Localization</b>	Nucleus, Cytoplasm
<b>Applications</b>	Western Blot : 0.5-1ug/ml Immunohistochemistry (FFPE) : 1-2ug/ml Direct ELISA : 0.1-0.5ug/ml (human recombinant protein)
<b>Limitations</b>	This Cdk6 antibody is available for research use only.



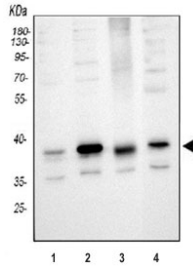
Western blot testing of human 1) HeLa, 2) SGC-7901, 3) K562 and 4) mouse SP2/0 lysate with Cdk6 antibody at 0.5ug/ml. Expected molecular weight: 36-40 kDa.



IHC testing of FFPE human intestinal cancer with Cdk6 antibody at 2ug/ml. HIER: boil tissue sections in pH6, 10mM citrate buffer, for 10-20 min followed by cooling at RT for 20 min.



IHC testing of FFPE human breast cancer with Cdk6 antibody at 2ug/ml. HIER: boil tissue sections in pH6, 10mM citrate buffer, for 10-20 min followed by cooling at RT for 20 min.



Western blot testing of 1) human HeLa, 2) human Jurkat, 3) human K562 and 4) mouse RAW264.7 cell lysate with Cdk6 antibody at 0.5ug/ml. Expected molecular weight: 36-40 kDa.

## Description

Cell division protein kinase 6, also called Plstire, is an enzyme that in humans is encoded by the CDK6 gene. The protein encoded by this gene is a member of the cyclin-dependent protein kinase (CDK) family. Radiation hybrid analysis and inclusion within a mapped clone place the CDK6 gene at 7q21. Serine/threonine-protein kinase involved in the control of the cell cycle and differentiation and promotes G1/S transition. This gene also involved in initiation and maintenance of cell cycle exit during cell differentiation. It prevents cell proliferation and regulates negatively cell differentiation, but is required for the proliferation of specific cell types. In addition, CDK6 plays a role in promoting the proliferation of beta-cells in pancreatic islets of Langerhans.

## Application Notes

Optimal dilution of the Cdk6 antibody should be determined by the researcher.

## Immunogen

Human Cdk6 recombinant protein (amino acids M1-A326) was used as the immunogen for the Cdk6 antibody.

## Storage

After reconstitution, the Cdk6 antibody can be stored for up to one month at 4°C. For long-term, aliquot and store at -20°C. Avoid repeated freezing and thawing.