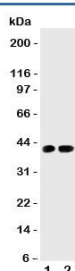


## Cdk6 Antibody (R31239)

Catalog No.	Formulation	Size
R31239	0.5mg/ml if reconstituted with 0.2ml sterile DI water	100 ug

**Bulk quote request**

<b>Availability</b>	1-3 business days
<b>Species Reactivity</b>	Human, Rat, Mouse
<b>Format</b>	Antigen affinity purified
<b>Clonality</b>	Polyclonal (rabbit origin)
<b>Isotype</b>	Rabbit IgG
<b>Purity</b>	Antigen affinity
<b>Buffer</b>	Lyophilized from 1X PBS with 2.5% BSA and 0.025% sodium azide/thimerosal
<b>UniProt</b>	Q64261
<b>Applications</b>	Western Blot : 0.5-1ug/ml
<b>Limitations</b>	This Cdk6 antibody is available for research use only.



Western blot testing of Cdk6 antibody and Lane 1: rat testis; 2: (r) lung tissue lysate.  
Predicted molecular weight: 36-40 kDa.

## Description

Cell division protein kinase 6, also called Pistire, is an enzyme that in humans is encoded by the CDK6 gene. The protein encoded by this gene is a member of the cyclin-dependent protein kinase(CDK) family. Radiation hybrid analysis and inclusion within a mapped clone place the gene at 7q21. Serine/threonine-protein kinase involved in the control of the cell cycle and differentiation and promotes G1/S transition. This gene also involved in initiation and maintenance of cell cycle exit during cell differentiation. It prevents cell proliferation and regulates negatively cell differentiation, but is required for the proliferation of specific cell types. CDK6 also plays a role in promoting the proliferation of beta-cells in pancreatic islets of Langerhans.

## Application Notes

The stated application concentrations are suggested starting amounts. Titration of the Cdk6 antibody may be required due to differences in protocols and secondary/substrate sensitivity.

## Immunogen

An amino acid sequence from the C-terminus of mouse Cell division protein kinase 6 (AYGALNHPYFQDLERYKDNL) was used as the immunogen for this Cdk6 antibody (100% rat homology).

## Storage

After reconstitution, the Cdk6 antibody can be stored for up to one month at 4°C. For long-term, aliquot and store at -20°C. Avoid repeated freezing and thawing.