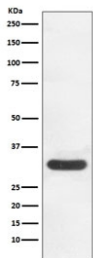


## CDK4 Antibody [clone HOB-3] (RQ5377)

Catalog No.	Formulation	Size
RQ5377	Antibody in PBS with 0.02% sodium azide, 50% glycerol and 0.4-0.5mg/ml BSA	100 ul

[Bulk quote request](#)

<b>Availability</b>	1-2 weeks
<b>Species Reactivity</b>	Human
<b>Format</b>	Purified
<b>Host</b>	Rabbit
<b>Clonality</b>	Rabbit Monoclonal
<b>Isotype</b>	Rabbit IgG
<b>Clone Name</b>	HOB-3
<b>Purity</b>	Affinity purified
<b>UniProt</b>	P11802
<b>Applications</b>	Western Blot : 1:1000-1:2000
<b>Limitations</b>	This CDK4 antibody is available for research use only.



Western blot testing of human HeLa cell lysate with CDK4 antibody. Predicted molecular weight ~34 kDa.

### Description

The protein encoded by the CDK4 gene is a member of the Ser/Thr protein kinase family. This protein is highly similar to the gene products of *S. cerevisiae* cdc28 and *S. pombe* cdc2. It is a catalytic subunit of the protein kinase complex that is important for cell cycle G1 phase progression. The activity of this kinase is restricted to the G1-S phase, which is controlled by the regulatory subunits D-type cyclins and CDK inhibitor p16(INK4a). This kinase was shown to be responsible for the phosphorylation of retinoblastoma gene product (Rb). Mutations in this gene as well as in its related proteins including D-type cyclins, p16(INK4a) and Rb were all found to be associated with tumorigenesis of a variety of

cancers. Multiple polyadenylation sites of this gene have been reported. [RefSeq]

## **Application Notes**

Optimal dilution of the CDK4 antibody should be determined by the researcher.

## **Immunogen**

A synthetic peptide specific to human CDK4 was used as the immunogen for the CDK4 antibody.

## **Storage**

Store the CDK4 antibody at -20oC.