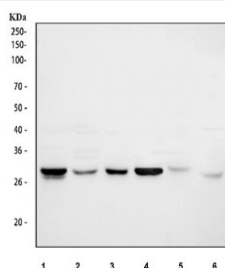


Cdk2 Antibody / Cell division protein kinase 2 (R30623)

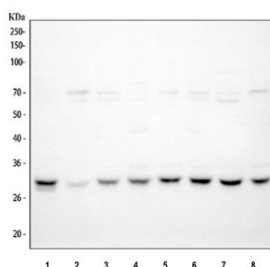
Catalog No.	Formulation	Size
R30623	0.5mg/ml if reconstituted with 0.2ml sterile DI water	100 ug

Bulk quote request

Availability	1-3 business days
Species Reactivity	Human, Mouse, Rat
Format	Antigen affinity purified
Host	Rabbit
Clonality	Polyclonal (rabbit origin)
Isotype	Rabbit IgG
Purity	Antigen affinity
Buffer	Lyophilized from 1X PBS with 2% Trehalose
UniProt	P24941
Applications	Western Blot : 0.5-1ug/ml
Limitations	This Cdk2 antibody is available for research use only.



Western blot testing of 1) human Jurkat, 2) human HepG2, 3) human U-2 OS, 4) human K562, 5) rat L6 and 6) mouse NIH 3T3 cell lysate with Cdk2 antibody. Predicted molecular weight ~33 kDa.



Western blot testing of human 1) Jurkat, 2) HepG2, 3) U-2 OS, 4) K562, 5) T-47D, 6) Caco-2, 7) 293T and 8) PC-3 cell lysate with Cdk2 antibody. Predicted molecular weight ~33 kDa.

Description

Cyclin-Dependent Kinase 2 is also known as p33. The protein is highly homologous to p34 (CDC2) kinase and more significantly homologous to *Xenopus* Eg1 kinase, suggesting that [Cdk2](#) is the human homolog of Eg1. The gene is mapped to 12q13, the same region to which the [Cdk4](#) gene maps. Human Cyclin A binds independently to two kinases, p34/Cdc2 or p33/Cdk2. In adenovirus-transformed cells, the viral E1A oncoprotein seems to associate with p33/Cyclin A but not with p34(cdc2)/cyclin A. The gene for p33 shares 65% sequence identity with p34(cdc2). Cdk2 plays a unique role in cell cycle regulation of vertebrate cells.

Application Notes

The stated application concentrations are suggested starting amounts. Titration of the Cdk2 antibody may be required due to differences in protocols and secondary/substrate sensitivity.

Immunogen

Amino acids 277-298 (AKAALAHPPFFQDVTKPVPHLRL) were used as the immunogen for this Cdk2 antibody (100% homologous in human, mouse and rat).

Storage

After reconstitution, the Cdk2 antibody can be stored for up to one month at 4°C. For long-term, aliquot and store at -20°C. Avoid repeated freezing and thawing.