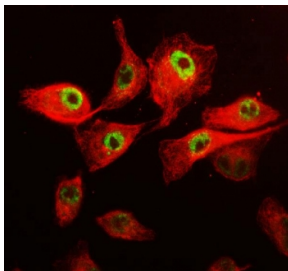


CDK12 Antibody / Cyclin-dependent kinase 12 / CrkRS (RQ6165)

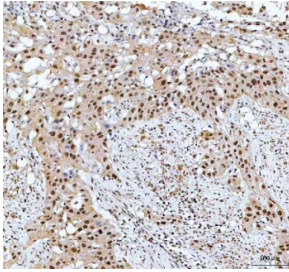
Catalog No.	Formulation	Size
RQ6165	0.5mg/ml if reconstituted with 0.2ml sterile DI water	100 ug

Bulk quote request

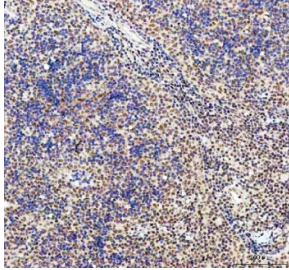
Availability	1-3 business days
Species Reactivity	Human
Format	Antigen affinity purified
Host	Rabbit
Clonality	Polyclonal (rabbit origin)
Isotype	Rabbit IgG
Purity	Affinity purified
Buffer	Lyophilized from 1X PBS with 2% Trehalose
UniProt	Q9NYV4
Localization	Nuclear
Applications	Western Blot : 1-2ug/ml Immunofluorescence : 5ug/ml Flow Cytometry : 1-3ug/million cells Immunohistochemistry (FFPE) : 2-5ug/ml Direct ELISA : 0.1-0.5ug/ml Immunoprecipitation : 2ug antibody/500ug lysate
Limitations	This CDK12 antibody is available for research use only.



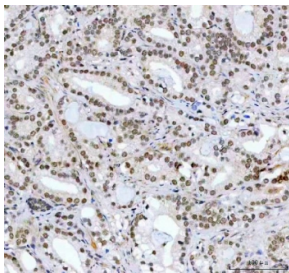
Immunofluorescent staining of FFPE human A549 cells with CDK12 antibody (green) and Beta Tubulin mAb (red). HIER: steam section in pH6 citrate buffer for 20 min.



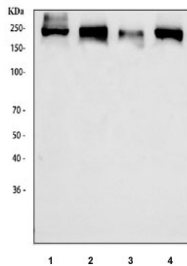
IHC staining of FFPE human bladder urothelial carcinoma tissue with CDK12 antibody. HIER: boil tissue sections in pH8 EDTA for 20 min and allow to cool before testing.



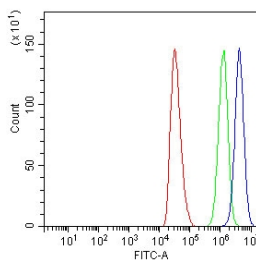
IHC staining of FFPE human spleen tissue with CDK12 antibody. HIER: boil tissue sections in pH8 EDTA for 20 min and allow to cool before testing.



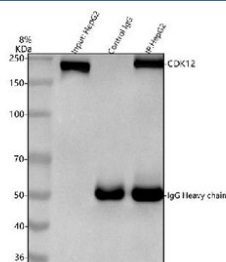
IHC staining of FFPE human prostate cancer tissue with CDK12 antibody. HIER: boil tissue sections in pH8 EDTA for 20 min and allow to cool before testing.



Western blot testing of human 1) HeLa, 2) K562, 3) Jurkat and 4) HepG2 cell lysate with CDK12 antibody. Predicted molecular weight ~164 kDa but commonly observed at 164-205 kDa depending on the degree of protein modification.



Flow cytometry testing of human HepG2 cells with CDK12 antibody at 1ug/million cells (blocked with goat sera); Red=cells alone, Green=isotype control, Blue= CDK12 antibody.



Immunoprecipitation of CDK12 protein from 500ug of human HepG2 whole cell lysate with 2ug of CDK12 antibody.

Description

CDK12 (Cyclin-dependent kinase 12) is a protein kinase that in humans is encoded by the CDK12 gene. This enzyme is a member of cyclin-dependent kinase protein family. CDK12 forms protein complexes with cyclin K (CCNK). The CDK12-CCNK complex acts at the level of RNA polymerase II (RNAPII) to regulate expression of long complex genes, several of which have roles in DNA maintenance and repair.

Application Notes

Optimal dilution of the CDK12 antibody should be determined by the researcher.

Immunogen

A human recombinant partial protein (amino acids Q1147-N1439) was used as the immunogen for the CDK12 antibody.

Storage

After reconstitution, the CDK12 antibody can be stored for up to one month at 4oC. For long-term, aliquot and store at -20oC. Avoid repeated freezing and thawing.