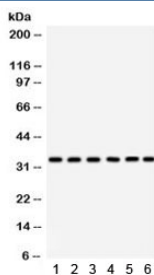


CDK1 Antibody / CDC2 (R31895)

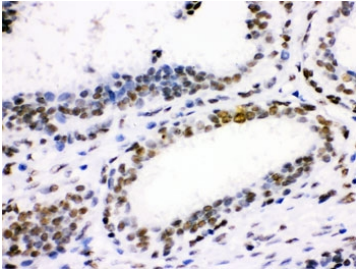
Catalog No.	Formulation	Size
R31895	0.5mg/ml if reconstituted with 0.2ml sterile DI water	100 ug

[Bulk quote request](#)

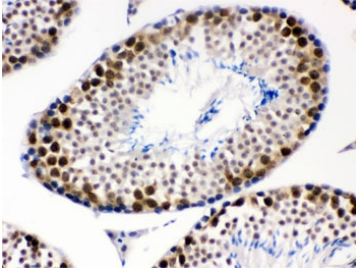
Availability	1-3 business days
Species Reactivity	Human, Mouse, Rat
Format	Antigen affinity purified
Host	Rabbit
Clonality	Polyclonal (rabbit origin)
Isotype	Rabbit IgG
Purity	Antigen affinity
Buffer	Lyophilized from 1X PBS with 2.5% BSA and 0.025% sodium azide
UniProt	P06493
Localization	Nuclear and cytoplasmic
Applications	Western Blot : 0.1-0.5ug/ml Immunohistochemistry (FFPE) : 0.5-1ug/ml Immunofluorescence/Immunocytochemistry : 2-4ug/ml Flow Cytometry : 1-3ug/10 ⁶ cells
Limitations	This CDK1 antibody is available for research use only.



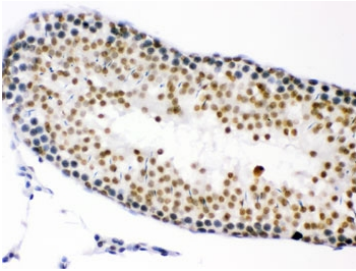
Western blot testing of 1) rat thymus, 2) rat spleen, 3) human MCF7, 4) HeLa, 5) Jurkat, and 6) mouse NIH3T3 lysate with CDK1 antibody. Predicted/observed molecular weight: ~33 kDa.



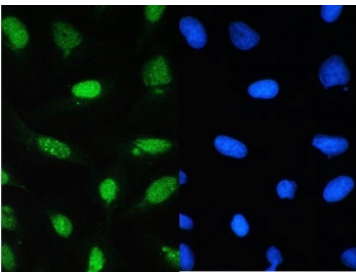
IHC testing of FFPE human breast cancer tissue with CDK1 antibody. HIER: Boil the paraffin sections in pH 6, 10mM citrate buffer for 20 minutes and allow to cool prior to staining.



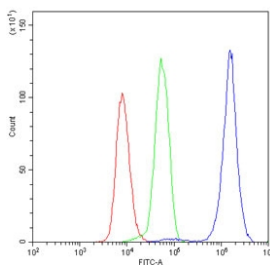
IHC testing of FFPE mouse testis with CDK1 antibody. HIER: Boil the paraffin sections in pH 6, 10mM citrate buffer for 20 minutes and allow to cool prior to staining.



IHC testing of FFPE rat testis with CDK1 antibody. HIER: Boil the paraffin sections in pH 6, 10mM citrate buffer for 20 minutes and allow to cool prior to staining.



IF/ICC staining of FFPE human U-2 OS cells with CDK1 antibody (green) at 2ug/ml and DAPI nuclear stain (blue). HIER: steam section in pH6 citrate buffer for 20 min.



Flow cytometry testing of human U937 cells with CDK1 antibody at 1ug/10⁶ cells (blocked with goat sera); Red=cells alone, Green=isotype control, Blue= CDK1 antibody.

Description

CDC2, Cell Division Cycle 2, is also known as CDK1 (Cyclin-dependent Kinase 1). CDC2 is a catalytic subunit of a protein kinase complex, called the M-phase promoting factor that induces entry into mitosis and is universal among eukaryotes. In HeLa cells CDC2 is the most abundant phosphotyrosine-containing protein and its phosphotyrosine content is subject to cell cycle regulation. CDC2 gene is located on chromosome 10.

Application Notes

Optimal dilution of the CDK1 antibody should be determined by the researcher.

Immunogen

Amino acids 66-297 of human CDK1/CDC2 were used as the immunogen for the CDK1 antibody.

Storage

After reconstitution, the CDK1 antibody can be stored for up to one month at 4°C. For long-term, aliquot and store at -20°C. Avoid repeated freezing and thawing.