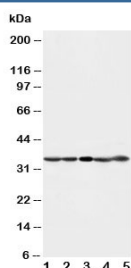


CDK1 Antibody / CDC2 (R30620)

Catalog No.	Formulation	Size
R30620	0.5mg/ml if reconstituted with 0.2ml sterile DI water	100 ug

Bulk quote request

Availability	1-3 business days
Species Reactivity	Human
Format	Antigen affinity purified
Clonality	Polyclonal (rabbit origin)
Isotype	Rabbit IgG
Purity	Antigen affinity
Buffer	Lyophilized from 1X PBS with 2.5% BSA and 0.025% sodium azide/thimerosal
UniProt	P06493
Applications	Western Blot : 0.5-1ug/ml
Limitations	This CDK1 antibody is available for research use only.



Western blot testing of CDK1 antibody and Lane 1: HeLa; 2: 293T; 3: A431; 4: CEM; 5: Jurkat cell lysate. Predicted molecular weight: ~33 kDa.

Description

Cyclin-dependent Kinase 1, also called Cell Division Cycle 2, or CDC2, is a catalytic subunit of a protein kinase complex called the M-phase promoting factor that induces entry into mitosis and is universal among eukaryotes. In HeLa cells, [Cdk1](#) is the most abundant phosphotyrosine-containing protein and its phosphotyrosine content is subject to cell cycle regulation. The CDC2 gene is located on chromosome 10.

Application Notes

The stated application concentrations are suggested starting amounts. Titration of the CDK1 antibody may be required due to differences in protocols and secondary/substrate sensitivity.

Immunogen

An amino acid sequence from the C-terminus of human CDK1 (KMALNHPYFNDLDNQIKKM) was used as the immunogen for this CDK1 antibody.

Storage

After reconstitution, the CDK1 antibody can be stored for up to one month at 4°C. For long-term, aliquot and store at -20°C. Avoid repeated freezing and thawing.