

## CDK1 Antibody / CDC2 [clone POH-1] (V2083)

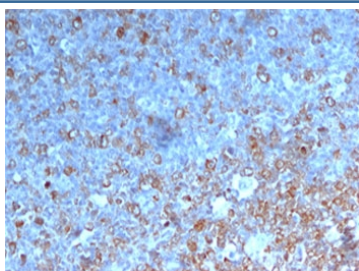
Catalog No.	Formulation	Size
V2083-100UG	0.2 mg/ml in 1X PBS with 0.1 mg/ml BSA (US sourced) and 0.05% sodium azide	100 ug
V2083-20UG	0.2 mg/ml in 1X PBS with 0.1 mg/ml BSA (US sourced) and 0.05% sodium azide	20 ug
V2083SAF-100UG	1 mg/ml in 1X PBS; BSA free, sodium azide free	100 ug



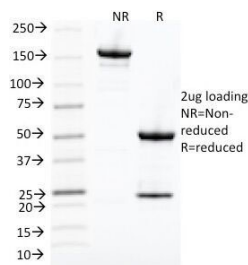
Citations (2)

[Bulk quote request](#)

Species Reactivity	Human
Format	Purified
Host	Mouse
Clonality	Monoclonal (mouse origin)
Isotype	Mouse IgG2a, kappa
Clone Name	POH-1
Purity	Protein G purified antibody
Buffer	1X PBS, pH 7.4
UniProt	P06493
Gene ID	983
Localization	Nuclear and Cytoplasmic
Applications	Western Blot : 0.5-2ug/ml Immunohistochemistry (FFPE) : 2-4ug/ml for 30 min at RT
Limitations	This <b>CDK1 antibody</b> is available for research use only.



IHC testing of human tonsil stained with CDK1 antibody.



SDS-PAGE Analysis of Purified, BSA-Free CDK1 Antibody (clone POH-1). Confirmation of Integrity and Purity of the Antibody.

## Description

This antibody recognizes a 34kDa protein, which is identified as cyclin dependent kinase 1 (Cdk1) or p34cdc2 protein kinase. CDK1 plays a crucial role during cell division and is most active during mitosis. It is predominantly localized in the nucleus. It is a serine/threonine kinase, which is activated by cyclin, presumably by de-phosphorylation of tyrosine residues. Activated CDK1 performs specific functions during mitosis, including nuclear envelope breakdown and chromosome condensation.

## Application Notes

The concentration stated for each application is a general starting point. Variations in protocols, secondaries and substrates may require the CDK1 antibody to be titrated up or down for optimal performance.

1. Staining of FFPE tissues requires boiling tissue sections in 10mM citrate buffer, pH 6.0, for 10-20 min followed by cooling at RT for 20 min.

## Immunogen

Purified recombinant human Cdk1 / p34cdc2 was used as the immunogen for this CDK1 antibody.

## Storage

Store the CDK1 antibody at 2-8°C (with azide) or aliquot and store at -20°C or colder (without azide).

## Alternate Names

Cdc2, CDC28A, CDKN1, CELL CYCLE CONTROLLER CDC2, Cell division control protein 2 homolog, Cell division cycle 2 G1 to S and G2 to M, Cell division protein kinase 1, Cyclin-dependent kinase 1, p34 Protein Kinase, P34CDC2, p34cdc2 antibody

## References (1)